

RESEARCH

Open Access



Association of ambient particulate matter with hospital admissions, length of hospital stay, and hospital costs due to cardiovascular disease: time-series analysis based on data from the Shanghai Medical Insurance System from 2016 to 2019

Wenyong Zhou^{1†}, Zexuan Wen^{1†}, Wenjia Peng¹, Xinyu Wang¹, Minyi Yang¹, Weibing Wang^{1,3,4,5}, Jing Wei^{2*} and Haiyan Xiong^{1,6*}

Abstract

Background There is limited evidence supporting a relationship of ambient particulate matter (PM), especially PM₁, with hospital admissions, hospital costs, and length of hospital stay (LOS) due to cardiovascular disease (CVD). We used a generalized additive model (GAM) to estimate the associations of these indicators due to CVD for each 10 µg/m³ increase in the level of PM₁, PM_{2.5}, and PM₁₀, and the attributable risk caused by PM on CVD was determined using the WHO air quality guidelines from 2005 and 2021.

Results For each 10 µg/m³ increase in the level of each PM and for a 0-day lag time, there were significant increases in daily hospital admissions for CVD (PM₁: 1.006% [95% CI 0.859, 1.153]; PM_{2.5}: 0.454% [95% CI 0.377, 0.530]; PM₁₀: 0.263% [95% CI 0.206, 0.320]) and greater daily hospital costs for CVD (PM₁: 523.135 thousand CNY [95% CI 253.111, 793.158]; PM_{2.5}: 247.051 thousand CNY [95% CI 106.766, 387.336]; PM₁₀: 141.284 thousand CNY [95% CI 36.195, 246.373]). There were no significant associations between PM and daily LOS. Stratified analyses demonstrated stronger effects in young people and males for daily hospital admissions, and stronger effects in the elderly and males for daily hospital costs. Daily hospital admissions increased linearly with PM concentration up to about 30 µg/m³ (PM₁), 60 µg/m³ (PM_{2.5}), and 90 µg/m³ (PM₁₀), with slower increases at higher concentrations. Daily hospital costs had an approximately linear increase with PM concentration at all tested concentrations. In general, hospital admissions, hospital costs, and LOS due to CVD were greater for PM_{2.5} than PM₁₀, and the more stringent 2021 WHO guidelines indicated greater admissions, costs, and LOS due to CVD.

[†]Wenyong Zhou and Zexuan Wen contributed equally to this work.

*Correspondence:

Jing Wei

weijing_rs@163.com

Haiyan Xiong

haiyanxiong@fudan.edu.cn

Full list of author information is available at the end of the article

Conclusions Short-term elevation of PM of different sizes was associated with an increased risk of hospital admissions and hospital costs due to CVD. The relationship with hospital admissions was strongest for men and young individuals, and the relationship with hospital costs was strongest for men and the elderly. Smaller PM is associated with greater risk.

Keywords Ambient particulate matter, Cardiovascular disease, Hospital admissions, Length of hospital stay, Hospital costs, Attributable risk

Introduction

There is increasing concern about the effects of air pollution on public health, and China is one of the most polluted countries in the world due to its rapid industrialization and urbanization [1]. The 2019 Global Burden of Disease Study (GBD2019) showed that air pollution was the fourth-leading risk factor for disability adjusted life years (DALYs) worldwide, and that particulate matter (PM) was responsible for 4.14 million deaths and 118 million DALYs globally during 2019, with 1.42 million (34.30%) of these deaths and 32.9 million (27.88%) of these DALYs in China [2].

Cardiovascular disease (CVD) is the leading cause of mortality and a major contributor to disability worldwide [2, 3]. From 1990 to 2019, the number of CVD cases worldwide increased from 271 million (95% uncertainty interval [UI]: 257 to 285 million) to 523 million (95% UI: 497 to 550 million), and the number of CVD deaths increased from 12.1 million (95% UI: 11.4 to 12.6 million) to 18.6 million (95% UI: 17.1 to 19.7 million). Several measures of the global burden of disease related to CVD (DALYs, years of life lost [YLL], and years lived with disability [YLDs]) have also increased greatly. In particular, from 1990 to 2019 the YLDs related to CVD increased from 17.7 million (95% confidence interval [CI]: 12.9 to 22.5 million) to 34.4 million (95% CI 24.9 to 43.6 million) [3].

Ambient air pollutants are recognized as modifiable risk factors for CVD [4, 5], and many epidemiological studies have shown that PM is associated with CVD [6, 7]. Similarly, many basic medical studies have provided mechanism-level evidence for a relationship between air pollution and CVD. In particular, air pollution can lead to increased oxidative stress, and the direct translocation of PM or secondary mediators produced in response to PM can lead to systemic effects, such as the induction of inflammatory factors [8–10].

Many studies have reported associations of hospital admissions for CVD with short-term increased levels of PM that has an aerodynamic diameter of 10 μm or less (PM_{10}) and 2.5 μm or less ($\text{PM}_{2.5}$) [6, 11–14]. However, these reported effects depend on the geographic region, the epidemiological model, and the specific type of PM. Thus, the results of many of these previous studies have limited relevance for Shanghai, which has a permanent

population of 24.8 million (according to the seventh national census) and is one of the most polluted cities in China. Although some studies have reported associations of short-term elevations of PM with hospital admissions, length of hospital stay (LOS), and hospital costs [6, 11–13, 15, 16], no study has yet examined the association of PM_1 with all of these indicators of CVD simultaneously, however, these indicators are very important for the formulation of medical policies, the allocation of medical resources and the prevention and control of air pollution [17].

Given this background, we assessed the impact of elevated levels of PM_1 , $\text{PM}_{2.5}$, and PM_{10} on hospital admissions, LOS, and hospital costs due to CVD in Shanghai.

Materials and methods

Data collection

Patient data

Data on daily hospital admissions, LOS, and hospital costs were from the Shanghai Medical Insurance System for the period of January 1, 2016 to December 31, 2019. The Shanghai Medical Insurance System includes basic medical insurance data for employees and basic medical insurance data for urban and rural residents. By the end of 2019, the number of employees and urban and rural residents covered by basic medical insurance in Shanghai had reached 15.41 million and 3.50 million, respectively, with a total number of 18.91 million, accounting for 76% of total permanent population (<http://ybj.sh.gov.cn/tjsj>).

The original database includes personal data containing patient ID, gender, age, date of hospital admission, LOS, hospital costs, and clinical diagnosis. We then reconstructed the original database into time series data including daily admissions, LOS, and hospital costs for CVD patients with basic demographic information.

Additionally, these data were from all tier 1, tier 2, and tier 3 hospitals in the entire city of Shanghai, and from a period before the imposition of COVID-19-related restrictions. The clinical diagnostic criteria for CVD were disease codes I00 to I99 (Diseases of the Circulatory System) from *International Classification of Diseases, Tenth Revision* (ICD-10) and all patients diagnosed within this disease codes range were enrolled in the study. Basic demographic

information included gender and age group (<45 years, 45–64 years, 65–74 years, and ≥ 75 years). Before data collection, this study was approved by the Ethics Committee of the School of Public Health of Fudan University.

Air pollution data

Data were collected for the seven most common air pollutants: PM₁, PM_{2.5}, PM₁₀, nitrogen dioxide (NO₂), sulfur dioxide (SO₂), ozone (O₃), and carbon monoxide (CO). Daily PM₁, PM_{2.5}, and PM₁₀ concentrations were from the ChinaHighAirPollutants (CHAP) dataset, which has a high resolution (1 km²) and high quality (<https://weijing-rs.github.io/product.html>). The PM₁₀, PM_{2.5}, and PM₁ dataset was from the latest version of open-source products, and were estimated using the Space-Time-Extra-Trees (STET) model from satellite remote sensing data. Previous research showed that these datasets had good predictability, and the cross-validation coefficients of determination were 0.90 (PM₁₀), 0.92 (PM_{2.5}), and 0.83 (PM₁) [18–20]. The daily concentrations of NO₂, O₃, CO, and SO₂ were from the Shanghai Municipal Bureau of Ecological Environment (<https://sthj.sh.gov.cn/>) from December 28, 2015 to December 31, 2019.

To improve the accuracy of recorded levels, aggregated daily concentrations of PM₁, PM_{2.5}, and PM₁₀ in Shanghai from December 25, 2015 to December 31, 2019 were calculated [21]. The specific steps used for these calculations were as follows: first, the administrative boundaries of each district of Shanghai were obtained, utilizing Easy-Poi (Baidu version), a simple and free Baidu map poi data acquisition tool. Second, using the “rgdal”, “raster” and “sf” packages in R software, daily PM₁, PM_{2.5} and PM₁₀ concentrations of 16 districts in Shanghai from December 25, 2015 to December 31 were extracted from the raster data. Third, the weights of the population of 16 districts to the total population of Shanghai were calculated using seventh national census of China (Additional file 1: Table S15). Fourth, the air pollutant concentration of each district was multiplied by the weights obtained in the previous step. Finally, the population-weighted air pollution of the study area was obtained by summing the districts’ obtained in the fourth step. Relatively simply, the daily concentrations of NO₂, O₃, CO, and SO₂ were expressed as arithmetic means of all monitoring stations, as in most previous time-series studies [6, 12, 22].

Meteorological data

To control for the potential confounding effects of meteorological factors in the models, daily mean temperature and relative humidity in Shanghai were collected from the National Meteorological Information Center (<http://data.cma.cn/>) for the period from December 25, 2015 to December 31, 2019. There are 11 ground meteorological

stations in Shanghai to collect relevant meteorological data, including temperature, atmospheric pressure, relative humidity, wind speed, precipitation and other factors.

CPI for medical care

Consumer Price Index (CPI) is a relative number that measures the price level of consumer goods and services over time, and comprehensively reflects the changes in the price level of consumer goods and services purchased by residents [23]. Previous research suggested that the Consumer Price Index (CPI) was related to hospital costs in a population [12, 24]. Thus, the monthly CPI for medical care in Shanghai from January, 2016 to December, 2019 were downloaded from the official website of the Shanghai Statistics Bureau (https://tjj.sh.gov.cn/ydsj61/index_2.html). We set the CPI of medical care in January 2016 as the baseline, then the follow-up monthly fixed base CPI was calculated one by one (Additional file 1: Table S16), and finally, the subsequent monthly hospital costs were adjusted with the monthly fixed base CPI (i.e., the hospital costs data we finally included in the study were equivalent to the price level of January, 2016).

Statistical analysis

Means, standard deviations (SDs), and percentiles (P₅, P₂₅, P₅₀, P₇₅, and P₉₅) were used to describe the distributions of air pollutants, meteorological factors, hospital admissions, LOS, and hospital costs due to CVD. A calendar heat map was used to present daily variations of hospital admissions, LOS, and hospital costs due to CVD.

Spearman correlation coefficients were calculated to characterize the relationships of the seven atmospheric pollutants (PM₁, PM_{2.5}, PM₁₀, NO₂, SO₂, CO, and O₃) with meteorological factors (daily average temperature, daily average relative humidity).

A generalized additive model (GAM) was used to assess the relationship of PM with daily hospital admissions, LOS, and hospital costs due to CVD. The GAM model, an extension of a generalized linear model, allows analysis of complex nonlinear relationships of variables using a smooth function, as proposed by Hastie and Tibshirani [25], and has been widely used in time series analysis [26–28]. The percentage change of daily admissions and the absolute increases of daily LOS and hospital costs were the dependent variables in the GAM model [6, 12, 16, 22].

The percentage change of daily admissions and the absolute increase of daily LOS and hospital costs as was calculated using the following formulas [6, 13, 22]:

$$\text{Percentage Change} = [\exp(\beta * 10) - 1] * 100,$$

$$\text{Absolute increase} = \beta * 10,$$

where β is the regression coefficient of PM from the GAM model.

The effect of different time lag(t) was examined including five individual lag days: (i) lag 0, the present day, that is, the day patients were admitted; (ii) lag 1, the previous day; (iii) lag 2, the day before lag 1; (iv) lag 3, the day before lag 2; (v) lag 4, the day before lag 3; and four cumulative lag days: (i) lag 01, the 2-day moving average of the present and previous day; (ii) lag 02, the 3-day moving average of the present and previous 2 days; (iii) lag 03, the 4-day moving average of the present and previous 3 days; (iii) lag 04, the 5-day moving average of the present and previous 4 days.

And then, based on preceding studies [22, 29], some covariates were selected, and the degree of freedom (df) for the time trends and other meteorological variables were used: 7 df per year for the time trends and seasonality, 6 df for the daily mean temperature (temp) and 3 df for the relative humidity (rh). Additionally, we also adjusted for the day of the week (dow) and public holidays (ph) in the GAM model. Therefore, the main model is shown as follows:

$$\log(E(Yt)) \text{ or } Y't = \alpha + \beta Zt + \text{ns}(\text{time}, 7) + \text{ns}(\text{temp}, 6) + \text{ns}(\text{rh}, 3) + \text{factor}(\text{dow}) + \text{factor}(\text{ph}),$$

where $E(Yt)$ is the estimated daily hospital admissions due to CVD, $Y't$ is the estimated daily LOS or hospital costs due to CVD, Zt is the PM concentration on lag(t) as mentioned above, β is the regression coefficient for Zt , α is the intercept and $\text{ns}()$ means natural spline.

The effect of individual characteristics on outcome was investigated using stratified analyses. The subgroup variables included gender and age group (< 45, 45–64, 65–74, and ≥ 75 years). The effect of subgroup variables and PM was tested using a Z statistic [30]:

$$Z = \frac{(\beta_1 - \beta_2)}{\sqrt{SE_1^2 + SE_2^2}},$$

where β_1 and β_2 are the effect estimates of the two groups, and SE_1 and SE_2 are their corresponding standard errors.

To better evaluate the burden of CVD due to PM, two different standards were used as reference concentrations: the WHO 2005 Air Quality Guidelines (AQG; <https://www.who.int/publications/i/item/WHO-SDE-PHE-OEH-06.02>) and the WHO 2021 AQG (<https://www.who.int/publications/i/item/9789240034228>). The formulas of calculating the attributable number (AN) and population attributable fraction (PAF) of hospital admissions, LOS, and hospital costs due to PM elevation based on previous studies are as follows [6, 13, 16, 22, 31]:

$$\text{AF for admissions} = 1 / [\exp(\beta * \Delta Ci) - 1],$$

$$\text{AN for admissions} = \sum_{i=1}^n \text{AF} * \text{daily admissions},$$

$$\text{AN for LOS or costs} = \sum_{i=1}^n \beta * \Delta Ci,$$

$$\text{PAF} = \frac{\text{Attributable number}}{\text{Total number}} * 100\%,$$

where AF denotes daily attributable fraction, β denotes the coefficients extracted from the previous GAM model, ΔCi is the difference between actual pollutant concentration and reference pollutant concentration. Total number is the total value of CVD patient admissions, LOS or hospital costs in study period. The difference in calculating AN is because different link function is used in GAM model for hospital admissions, LOS and hospital costs.

We characterized the dose–response relationship of PM_{10} , $PM_{2.5}$, and PM_{10} concentrations with the percentage change of daily hospital admissions, absolute increase of daily LOS, and hospital costs due to CVD, as described previously [22].

Finally, four sensitivity analyses were performed to check whether there were any interactions between pollutants or possible multicollinearity problems and confirm the robustness of the results. First, the results were fit to a two-pollutant model (PM_{10} , $PM_{2.5}$, PM_{10} with O_3 , SO_2 , NO_2 , CO). Second, the degrees of freedom for calendar time were changed from 5 to 9 per year. Third, the degrees of freedom for temperature were changed from 4 to 8. Finally, the degrees of freedom for relative humidity were changed from 1 to 5.

All statistical analyses were conducted using R software version 4.2.1 with the following packages: splines, MGCV, ggplot2, raster, sf, rgdal, as indicated. EasyPoi (Baidu version) software was used to define the administrative boundaries of all districts in Shanghai. All statistical tests were two-sided, and a P -value less than 0.05 was considered significant.

Results

Descriptive results

We identified 1,896,741 hospital admissions due to CVD (I00–I99 in ICD-10) for the entire city of Shanghai from January 1, 2016 to December 31, 2019. These admissions were associated with 14,829,931 LOS days and hospital costs of 39,981,403 thousand Chinese Yuan (CNY). Among these patients, 51.02% were males and 50.42% were older than 75 years (Table 1). We also presented

Table 1 Mean, SD, and distributions of hospital admissions, LOS, and hospital costs due to cardiovascular disease during the study period, and characteristics of different patient subgroups

Variable	Total	Mean ^a	SD ^a	P ₅	P ₂₅	P ₅₀	P ₇₅	P ₉₅
Hospital admissions	1,896,741	1298.25	485.83	429	947	1469	1634	1873
LOS (days)	14,829,931	10,150.53	4301.60	3033	6484	11,580	13,013	14,869
Hospital costs ^b (1000 CNY)	39,981,403	27,366	10,402	8104	21,974	29,875	34,715	41,099
Gender								
Male	967,736 (51.02%)	662.38	251.96	210	486	741	838	976
Female	929,005 (48.98%)	635.87	235.76	215	457	726	799	909
Age group, years								
≤ 45	84,373 (4.45%)	57.75	23.01	18	43	59	73	93
45–64	337,039 (17.77%)	230.69	97.00	62	169	245	302	370
65–75	519,085 (27.37%)	355.29	142.37	103	265	386	457	552
≥ 75	956,244 (50.42%)	654.51	240.96	229	443	754	817	914

LOS length of hospital stay

^a Here and below: mean and SD refer to average per day and corresponding standard deviation^b Hospital costs were calculated according to CNY in January 2016

these data using a calendar heat map that describes the daily variations in the number of hospital admissions, LOS, and hospital costs due to CVD (Additional file 1: Fig. S1). Analysis of the seven air pollutants indicated the mean daily levels were as follows: PM₁ (21.38 µg/m³), PM_{2.5} (37.73 µg/m³), PM₁₀ (60.47 µg/m³), O₃ (97.47 µg/m³), NO₂ (40.09 µg/m³), SO₂ (10.01 µg/m³), and CO (0.67 mg/m³). The mean daily temperature was 17.66 °C and the mean relative humidity was 73.33% (Table 2).

Correlations of air pollutants and meteorological variables

We calculated Spearman correlation coefficients to examine the relationships of air pollution and meteorological variables (Additional file 1: Table S1 and Fig. S2). The results indicated that daily levels of PM₁, PM_{2.5}, and PM₁₀ had positive correlations with O₃, NO₂, SO₂, and CO, and negative correlations with temperature and relative humidity.

Effects of different particulate matter and lag times

We then used a GAM model with different lag times to examine the effects of PM₁, PM_{2.5}, and PM₁₀ on daily hospital admissions, LOS, and hospital costs due to CVD (Fig. 1, Additional file 1: Table S2). Each of the three PMs had a significant positive association with daily hospital admissions and hospital costs, but not with daily LOS. Additionally, as the diameter of PM decreased, the effect was greater, although the increases were not always statistically significant. The number of lag days with the greatest effect differed among the different PMs.

Analysis of the percentage of increased daily hospital admissions indicated the increase for PM₁ was 1.089% (95% CI 0.927, 1.251) for a cumulative 1-day lag (lag 01), the increase for PM_{2.5} was 0.454% (95% CI 0.377, 0.530) for a lag of 0 days (lag 0), and the increase for PM₁₀ was 0.263% (95% CI 0.206, 0.320) for a lag of 0 days (lag 0).

For daily hospital costs in thousands of CNY, the increase for PM₁ was 649.703 (95% CI 322.490, 976.916)

Table 2 Mean, SD, and distributions of daily levels of seven air pollutants, temperature, and relative humidity (CHAP dataset)

Variables	Mean	SD	P ₅	P ₂₅	P ₅₀	P ₇₅	P ₉₅
PM ₁ , µg/m ³	21.38	11.16	7.69	13.34	18.93	27.01	43.28
PM _{2.5} , µg/m ³	37.73	21.39	13.82	22.24	32.35	47.34	78.61
PM ₁₀ , µg/m ³	60.47	29.25	26.36	38.79	53.18	76.23	115.22
O ₃ , µg/m ³	97.47	41.6	43	68	90	120	182
NO ₂ , µg/m ³	40.09	18.12	16	27	37	50	75
SO ₂ , µg/m ³	10.01	4.75	5	7	9	12	19
CO, mg/m ³	0.67	0.22	0.4	0.5	0.6	0.8	1.1
Temp, °C	17.66	8.72	3.8	10.1	18.5	24.7	30.7
Relative humidity, %	73.33	12.37	51	65	74	83	92

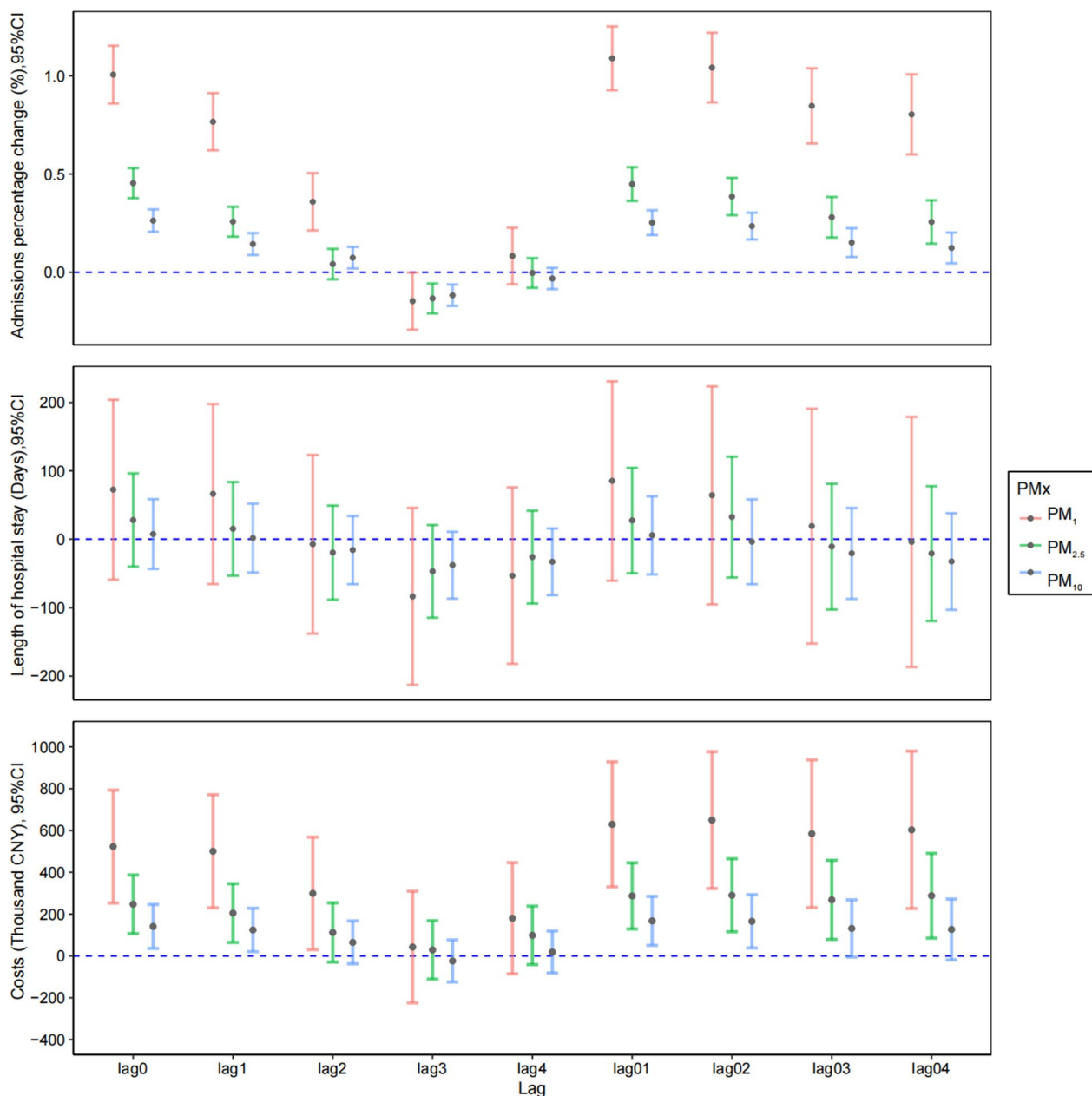


Fig. 1 Effect of different PM and lag time on percentage change in daily hospital admissions, absolute LOS, and absolute hospital costs due to CVD. PM₁, PM_{2.5}, and PM₁₀ are per 10 μg/m³ and CNY is Chinese Yuan

for lag 01, the increase for PM_{2.5} was 290.178 (95% CI 115.641, 464.714) for lag 02, and the increase for PM₁₀ was 167.635 (95% CI 50.379, 284.890) for lag 02.

Stratified analyses

Subgroup analysis with stratification by gender indicated the effect of PM on daily hospital admissions, LOS, and hospital costs due to CVD were consistently greater in males than females, although most of these differences

were not significant for different PM and lag days (Fig. 2, Additional file 1: Tables S3–S5). In general, stratification by age indicated that the associations of PM with daily hospital admissions were greater in patients less than 45 years old (Fig. 3, Additional file 1: Table S6); the associations of PM with daily LOS were greater in patients more than 75 years old, although these associations were not significant (Fig. 3, Additional file 1: Table S7); and the associations of PM with daily hospital costs were greater

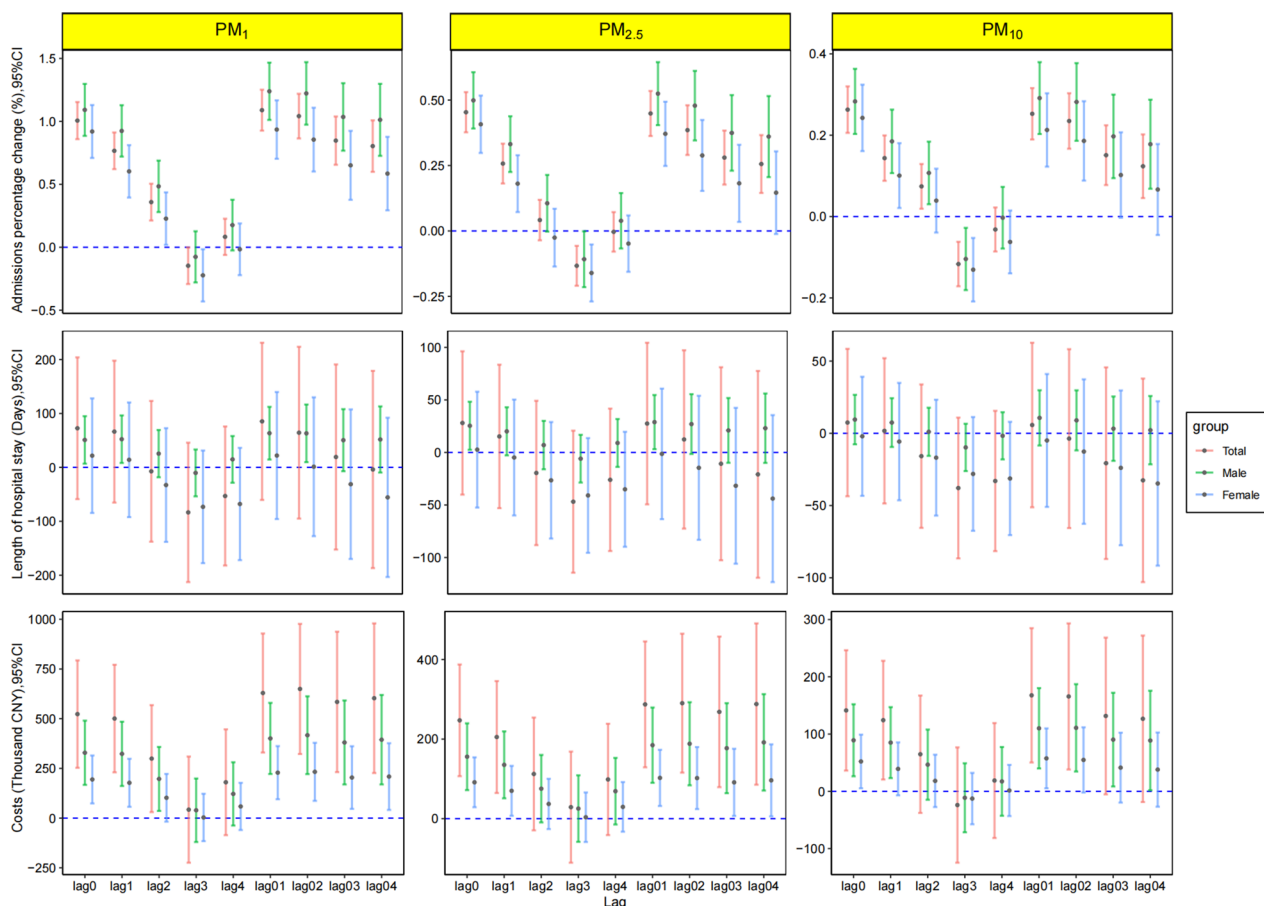


Fig. 2 Effect of PM and lag time on percentage change in daily hospital admissions, LOS, and hospital costs due to CVD for all patients, males, and females. PM_1 , $PM_{2.5}$ and PM_{10} are per $10 \mu\text{g}/\text{m}^3$ and CNY is Chinese Yuan

in patients more than 75 years old (Fig. 3, Additional file 1: Table S8). Additionally, there were significant associations between PM and daily LOS in patients less than 45 years old on some lag days, in contrast to the results from analysis of all patients (Fig. 3, Additional file 1: Table S7).

Attributable risk from particulate matter

We then assessed the attributable risk (i.e., attributable number [AN] and population attributable fraction [PAF]), of air pollutants on hospital admissions, LOS, and hospital costs due to CVD using the WHO 2005 AQG and the WHO 2021 AQG (Table 3). The lower target values in the 2021 AQG were proposed to address concerns related to the high hospital admissions and costs when higher target values were used. In general, hospital admissions, costs, and LOS due to CVD were greater for $PM_{2.5}$ than for PM_{10} , and the more stringent 2021 WHO AQG guidelines indicated greater admissions, costs, and LOS due to CVD. For example, based on the WHO 2021 AQG, from January 1, 2016 to December 31, 2019, the

overall total excess hospital admissions were 19,419 (95% CI 16,160, 22,666) due to $PM_{2.5}$ and 7716 (95% CI 6053, 9374) due to PM_{10} ; the overall total excess hospital costs in thousands of CNY were 82,0255 (95% CI 354,482, 1,286,027) due to $PM_{2.5}$ and 319,302 (95% CI 81,800, 556,804) due to PM_{10} . The results were similar after stratification by sex and age (Additional file 1: Tables S9, S10).

Effect of different levels of particulate matter

We then analyzed the relationship of different levels of PM_1 , $PM_{2.5}$, and PM_{10} with daily hospital admissions, LOS, and hospital costs due to CVD (Fig. 4). The relationships of each PM level with daily hospital admissions were approximately linear at low concentrations (PM_1 : $0\text{--}30 \mu\text{g}/\text{m}^3$; $PM_{2.5}$: $0\text{--}60 \mu\text{g}/\text{m}^3$; PM_{10} : $0\text{--}90 \mu\text{g}/\text{m}^3$), but there was a saturation or decrease at high PM concentrations ($PM_1 > 30 \mu\text{g}/\text{m}^3$; $PM_{2.5} > 60 \mu\text{g}/\text{m}^3$; $PM_{10} > 90 \mu\text{g}/\text{m}^3$). There were no significant associations of PM with daily LOS. The relationships of PM_1 and $PM_{2.5}$ with daily hospital costs were approximately linear, but there was a nonlinear relationship for PM_{10} .

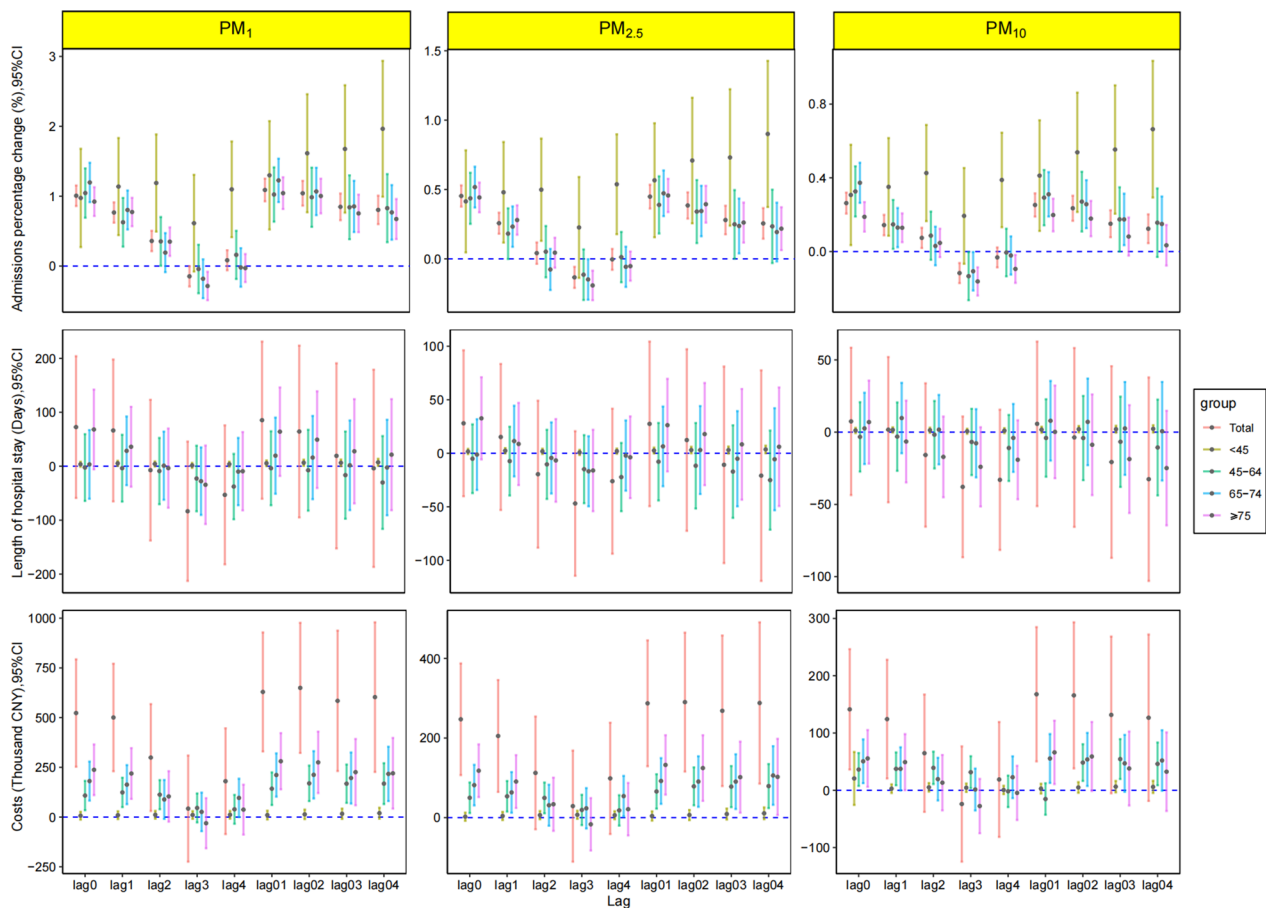


Fig. 3 Effect of PM and lag time on percentage change in daily hospital admissions, LOS, and hospital costs due to CVD in different age groups. PM₁, PM_{2.5} and PM₁₀ are per 10 μg/m³ and CNY is Chinese Yuan

Table 3 Hospital admissions, LOS, and hospital costs due to CVD according to the 2005 and 2021 WHO air quality guidelines

	Guideline	WHO 2005		WHO 2021	
		PM _{2.5}	PM ₁₀	PM _{2.5}	PM ₁₀
	Target (μg/m ³)	25 (24 h)	50 (24 h)	15 (24 h)	45 (24 h)
Hospital admissions	AN, 95% CI	10,886 (9062, 12,704)	5233 (4107, 6353)	19,419 (16,160, 22,666)	7716 (6053, 9374)
	PAF (%), 95% CI	0.574 (0.478, 0.700)	0.276 (0.217, 0.335)	1.024 (0.852, 1.195)	0.407 (0.319, 0.494)
LOS (days)	AN, 95% CI	52,127 (-74,698, 178,953)	11,407 (-66,634, 89,448)	93,090 (-133,398, 319,578)	16,855 (-98,459, 132,169)
	PAF (%), 95% CI	0.352 (-0.504, 1.207)	0.077 (-0.449, 0.603)	0.628 (-0.009, 0.0215)	0.114 (-0.664, 0.891)
Hospital cost (1000 CNY)	AN, 95% CI	459,313 (198,497, 720,129)	216,094 (55,360, 376,829)	820,255 (354,482, 1,286,027)	319,302 (81,800, 556,804)
	PAF (%), 95% CI	1.149 (0.496, 1.801)	0.581 (0.127, 1.035)	2.052 (0.887, 3.217)	0.799 (0.205, 1.393)

Particulate matter concentration is lag 0 for admissions, LOS and hospital cost

AN attributable number, LOS length of hospital stay, PM particulate matter, PAF population attributable fraction, CNY Chinese Yuan

Sensitivity analysis

We performed two sensitivity analyses to assess the robustness of our results. The results of the first analysis showed that fitting using a two-pollutant model

(Additional file 1: Table S11) generally led to similar results regarding the effects of PM on daily hospital admissions, LOS, and hospital costs after adjusting for other pollutants. However, the effect estimates were not

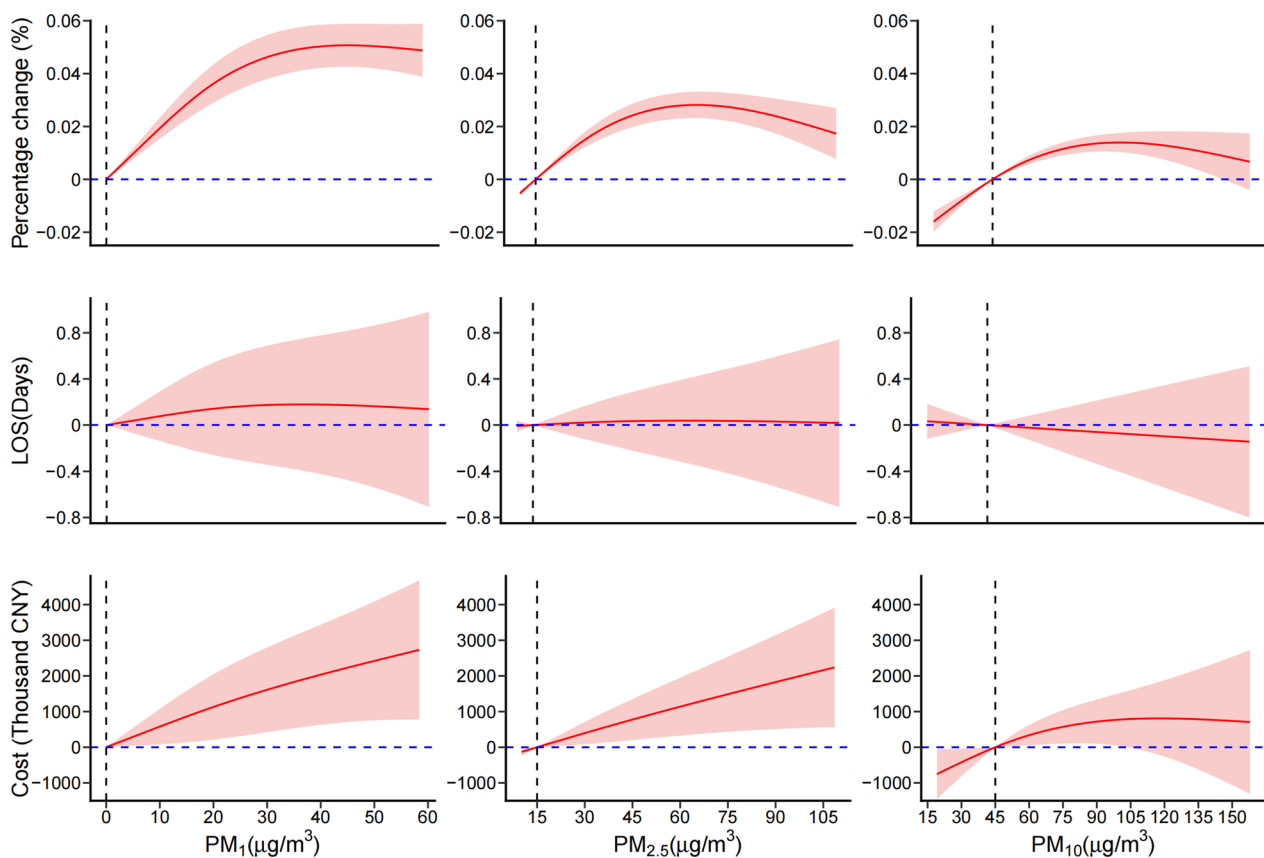


Fig. 4 Relationship of PM levels at lag0 with daily hospital admissions, LOS, and hospital costs due to CVD. The dashed vertical lines ($0 \mu\text{g}/\text{m}^3$ for PM_{10} , $15 \mu\text{g}/\text{m}^3$ for $\text{PM}_{2.5}$ and $45 \mu\text{g}/\text{m}^3$ for PM_{10}) are the target values. LOS length of hospital stay, PM particulate matter, CNY Chinese Yuan

significant for the associations of some PM sizes and partial outcomes after adjusting for NO_2 and CO. The rest sensitivity analyses indicated that there were almost no changes of the effect estimates after changing the degrees of freedom for calendar time, temperature and relative humidity (Additional file 1: Tables S12–S14).

Discussion

Main findings and comparisons with previous studies

The major finding of this ecological time-series study is that an elevated level of PM was significantly associated with a rapid increase in the risk of hospital admissions and hospital costs due to CVD and smaller PM had a greater effect. Previous studies also reported associations of PM with hospital admissions and hospital costs for CVD [11–13, 32]. For instance, a recent study reported that short-term elevation of $\text{PM}_{2.5}$ and PM_{10} increased hospital admissions and hospital costs for CVD and diabetes mellitus [6], and other studies reported that long-term elevation of PM_1 and $\text{PM}_{2.5}$ increased the risk of CVD and smaller PM had a greater effect than larger [7, 33–35]. However, some studies reported the possibility

of relationship between PM and daily LOS due to CVD [6, 36]. Therefore, our contrary findings regarding the relationship of PM and daily LOS due to CVD require an explanation. We suggest that the unique characteristics of our population and heterogeneity of PM may explain our findings.

Previous studies of the effect of lag time on the association of $\text{PM}_{2.5}$ and PM_{10} with CVD reported maximal effects for longer lag days than in the present study [32, 37]. We found maximal effects for lag days of lag0, lag01, and lag02, depending on the PM. This difference in lag times among studies may be because individual geographic regions have PM that differ in chemical composition [38], and also have populations that differ in the proportions of different CVD subtypes. Consistent with this interpretation, a recent study reported an association between PM and acute coronary syndrome (a subtype of CVD) with lag times measured in hours [39].

In line with previous studies [22, 40, 41], we found that males tended to be more vulnerable to PM based on daily hospital admissions, LOS, and hospital costs due to CVD. However, gender was not a statistically significant

modifier in our study, consistent with several previous studies [40, 41]. Our age-stratified analysis indicated that patients less than 45 years old were more vulnerable to PM based on daily hospital admissions due to CVD, in line with previous studies [6, 42]. This may be because younger people engage in more outdoor activities, making them more likely to inhale air pollutants [42]. However, the elderly were more vulnerable to PM based on daily hospital costs due to CVD, in line with a previous study [6]. This may be because CVD in the elderly is a more serious threat because of their weaker immune responses [43], and hospital costs are closely related to disease severity [44].

We used the 2005 AQG and 2021 AQG from the WHO to calculate the attributable risk, and our results were consistent with several previous studies [6, 13, 32]. Importantly, our results showed that there would be significant public health and economic benefits if the air quality standards in Shanghai met the most recent guidelines of the WHO. For example, if Shanghai followed the WHO's 2021 AQG on PM_{2.5} during the 4-year study period, there would have been nearly 20,000 fewer hospitalizations and the total hospital costs would have been more than 800 million CNY lower. Thus, if policy makers and the government can meet these targets in the future, it will have profound public health and economic implications.

Our analysis of dose–response relationships of PM and CVD indicated a linear association between at low PM concentrations, and a progressively weaker effect at higher PM concentrations. There was a nearly linear association between PM and hospital costs in the concentration range we analyzed. Previous studies also reported a nonlinear relationship between PM and hospital admissions [22, 45], although these studies focused on respiratory diseases. A possible explanation for this saturation effect may simply be that people avoid the outdoors or wear dust masks when outside when the level of air pollution is very high. The nearly linear relationship of PM level with hospital costs was unsurprising because hospital costs have a closer relationship with disease severity than hospital admissions [44].

Our sensitivity analysis using a two-pollutant model showed the associations between PM and CVD remained positive, except after adjusting for NO₂ and CO in partial outcomes. Previous studies reported similar results. For example, Tsai et al. found that the adverse effect of PM_{2.5} was not statistically significant after adjusting for NO₂ or CO [46]. A detailed analysis in a recent review proposed that the higher CVD mortality from PM_{2.5} alone and NO₂ alone than from NO₂ and PM_{2.5} together may be because these two pollutants have antagonistic effects or multicollinearity between them [47, 48].

Potential biological mechanism

At present, the biological mechanism responsible for the increased risk of CVD due to PM is not completely clear, but there are several possible explanations. Firstly, PM can cause oxidative stress [8–10, 49]. Oxidative stress following PM exposure is the first response in humans, followed by more delayed responses in other variables, suggesting that oxidative stress may be the primary cause of CVD [50]. Secondly, PM can directly damage the cardiovascular system by translocation throughout the body, and cause tissue damage [51]; after this damage, secondary mediators play a key role in damage of the cardiovascular system damage [8]. For example, air pollution can lead to an increase in coagulation factors and platelet activation, thus favoring thrombus formation [49]. A meta-analysis showed that PM exposure increased the level of TNF- α [10], and the presence of PM in the lungs led to the release of inflammatory factors and other mediators, which then moved to various parts of the body through the systemic circulation [52]. These many mediators may enhance oxidative stress in the vasculature via activation of TLR4 pathways [53].

The possible reason for smaller PM had a greater effect than larger for all lag times is that PM₁ tends to have a larger relative surface area and more readily absorbs toxic substances and heavy metals, remains airborne and near ground level for a longer period of time, and can more easily enter the alveoli and systemic circulation [54].

Strengths and limitations

Our study had several major strengths. First, to the best of our knowledge, this is the first study that simultaneously examined the relationship of PM of three different sizes (PM₁, PM_{2.5}, and PM₁₀) with hospital admissions, LOS, and hospital costs due to CVD; to analyze the dose–response relationships of different PM with CVD; and to assess the burden of CVD attributable to air pollutants using different two different sets of criteria (AQG) from the WHO. Our results thus provide a comprehensive overview of the relationship between air pollutants and CVD in terms of acute effects and disease burden, which was also not done in other previous studies. Second, our study had a large sample size, in that there were nearly 2 million CVD patients, and we included almost all CVD patients in Shanghai during the 4-year study period, making our estimates highly representative and reliable. Third, to improve the accuracy of the recorded levels of PM, we calculated aggregated daily PM₁, PM_{2.5} and PM₁₀ concentrations in Shanghai from December 25, 2015 to December 31, 2019 and used statistical weighting that was based on populations in different regions of Shanghai. Finally, we used the monthly CPI for medical care to adjust our estimates of hospital costs.

However, some limitations should be considered. Firstly, this was an ecological study and therefore could have been affected by the ecological fallacy. Thus, we cannot make definitive conclusions regarding the association of air pollution with an individual's risk of CVD, and cannot make inferences regarding causality, even though we used several methods to reduce confounding bias. Second, we had no data on the exact residential locations of patients, and merely calculated average air pollutant concentrations using fixed monitoring stations and PM raster data, a method that could result in measurement errors. Thus, we had no data on the actual exposures of individual residents. Third, hospitals of all three tiers in Shanghai performed the diagnoses of CVD, so some classification bias is inevitable. Additionally, potential confounding factors, including occupation, education level, medication history, socioeconomic status, and individual behaviors (e.g., drinking and smoking status), were not available from the Medical Insurance System, making it impossible to perform adjustment in our models. Finally, although all of our analyses were prespecified based on clear hypotheses and biological plausibility, we acknowledge that our use of multiple comparisons increased the risk of type I error.

Implications for policy makers

Our findings suggest that the government should implement aggressive and prompt strategies that aim to improve air quality because this could yield significant public health benefits and reduce the disease burden and economic burden. Additionally, PM₁ was responsible for a considerable part of the risk for CVD. Therefore, a more effective policy should focus more on PM₁, rather than PM_{2.5} and PM₁₀.

Conclusion

Our results suggest that an elevation of PM may lead to a rapid increase in the risk of hospital admissions and hospital costs due to CVD. The effect on hospital admissions was especially strong for men and younger individuals, and the effect on hospital costs was especially strong for men and elderly individuals. These findings suggest that governments should improve air quality by implementing aggressive strategies to reduce the burden of disease and economic burden. Notably, smaller PM was associated with greater risk. Thus, to reduce the burden of air pollution on human health and hospital costs, we suggest that PM₁ should be considered a priority in future air quality standards and guidelines. However, considering the limitations of our study, we also recommend performing additional large and well-designed studies to confirm our results.

Abbreviations

AF	Attributable fraction
AN	Attributable number
AQG	Air quality guideline
CHAP	China High Air Pollutants Dataset
CI	Confidence interval
CNY	Chinese yuan
CO	Carbon monoxide
CVD	Cardiovascular disease
DALYs	Disability adjusted life years
<i>df</i>	Degree of freedom
GAM	Generalize additive model
GBD2019	Global Burden of Disease Study 2019
ICD-10	International Classification of Diseases 10th Revision
LOS	Length of hospital stay
NO ₂	Nitrogen dioxide
<i>ns</i>	Natural Spline Function
O ₃	Ozone
PAF	Population attributable fraction
PM	Particulate matter
PM ₁	Particulate matter with an aerodynamic diameter < 1 μm
PM ₁₀	Particulate matter with an aerodynamic diameter < 10 μm
PM _{2.5}	Particulate matter with an aerodynamic diameter < 2.5 μm
Rh	Relative humidity
SD	Standard deviations
SO ₂	Sulfur dioxide
UI	Uncertain interval
WHO	World health organization
YLDs	Years lived with disability
YLLs	Years of life lost

Supplementary Information

The online version contains supplementary material available at <https://doi.org/10.1186/s12302-023-00754-z>.

Additional file 1: Table S1. Spearman correlation coefficients among air pollutants and meteorological factors. **Table S2.** Effect of different PM and lag time on percentage change in daily hospital admissions, absolute LOS, and absolute hospital costs due to CVD. **Table S3.** Effect of PM₁ and lag time on percentage change in daily hospital admissions, LOS, and hospital costs due to CVD for males and females. **Table S4.** Effect of PM_{2.5} and lag time on percentage change in daily hospital admissions, LOS, and hospital costs due to CVD for males and females. **Table S5.** Effect of PM₁₀ and lag time on percentage change in daily hospital admissions, LOS, and hospital costs due to CVD for males and females. **Table S6.** Effect of PM and lag time on percentage change (%) in daily hospital admissions due to CVD in different age groups. **Table S7.** Effect of PM and lag time on LOS (days) due to CVD in different age groups. **Table S8.** Effect of PM and lag time on hospital costs (Thousand CNY) due to CVD in different age groups. **Table S9.** Hospital admissions, LOS, and hospital costs due to CVD for males and females according to the 2005 and 2021 WHO air quality guidelines. **Table S10.** The Hospital admission, LOS and Hospital costs attributable risk of for CVD on age group with different air quality guideline. **Table S11.** The effect of PMs with 95% confidence interval of hospital admissions, LOS and hospital costs for cardiovascular diseases per 10 μg/m³ increase in concentrations of PM₁, PM_{2.5} and PM₁₀ using two-pollutant models. **Table S12.** Hospital admissions percentage change, LOS and hospital costs with 95% confidence interval in hospital admissions for cardiovascular diseases associated with a 10 μg/m³ increase in concentrations of PM₁, PM_{2.5} and PM₁₀ through changing degrees of freedom for the calendar time. **Table S13.** Hospital admissions percentage change, LOS and hospital costs with 95% confidence interval in hospital admissions for cardiovascular diseases associated with a 10 μg/m³ increase in concentrations of PM₁, PM_{2.5} and PM₁₀ through changing degrees of freedom for temperature. **Table S14.** Hospital admissions percentage change, LOS and hospital costs with 95% confidence interval in hospital admissions for cardiovascular diseases associated with a 10 μg/m³ increase in concentrations of PM₁, PM_{2.5} and PM₁₀ through changing degrees of freedom for

relative humidity. **Table S15.** Population size and weight of each district in Shanghai from China's 2020 census data.

Acknowledgements

We express our sincere gratitude to all participants. We thank Shanghai Health Insurance Bureau for supporting the study.

Author contributions

WZ: conceptualization, data curation, software, formal analysis, writing—original draft. ZW: conceptualization, data curation, software, formal analysis, writing—original draft. WP: data curation, resources, formal analysis. XW: formal analysis. MY: formal analysis. WW: conceptualization, resources, methodology, writing—review and editing, project administration, funding acquisition. JW: data curation, resources writing review and editing. HX: conceptualization, resources, methodology, writing—review and editing, project administration, funding acquisition. The author(s) read and approved the final manuscript.

Funding

This work was supported by the National Natural Science Foundation of China [Grant No. 82073612] and Shanghai New Three-year Action Plan for Public Health [Grant No. GWV-10.1-XK01].

Availability of data and materials

The data that support the findings of this study are available from the corresponding author upon reasonable request.

Declarations

Ethics approval and consent to participate

Not applicable.

Consent for publication

All authors have approved the manuscript for submission.

Competing interests

The authors declare they have nothing to disclose.

Author details

¹Department of Epidemiology, School of Public Health, Fudan University, 138 Yi Xue Yuan Road, Shanghai 200032, China. ²Department of Atmospheric and Oceanic Science, Earth System Science Interdisciplinary Center, University of Maryland, College Park, MD 20740, USA. ³Key Laboratory of Public Health Safety of Ministry of Education, Fudan University, Shanghai 200032, China. ⁴Key Laboratory of Health Technology Assessment, National Health and Family Planning Commission of the People's Republic of China, Fudan University, Shanghai, China. ⁵RDR-ICoE on Risk Interconnectivity and Governance on Weather/Climate Extremes Impact and Public Health, Fudan University, Shanghai 200032, China. ⁶Key Lab of Health Technology Assessment, Fudan University, Shanghai 200032, China.

Received: 20 April 2023 Accepted: 11 June 2023

Published online: 22 June 2023

References

- Rohde RA, Muller RA (2015) Air pollution in China: mapping of concentrations and sources. *PLoS ONE* 10(8):e0135749
- Murray CJL, Aravkin AY, Zheng P, Abbafati C, Abbas KM, Abbasi-Kangevari M, Abd-Allah F, Abdelalim A, Abdollahi M, Abdollahpour I et al (2020) Global burden of 87 risk factors in 204 countries and territories, 1990–2019: a systematic analysis for the global burden of disease study 2019. *Lancet* 396(10258):1223–1249
- Roth GA, Mensah GA, Johnson CO, Addolorato G, Ammirati E, Baddour LM, Barengo NC, Beaton AZ, Benjamin EJ, Benziger CP et al (2020) Global burden of cardiovascular diseases and risk factors, 1990–2019: update from the GBD 2019 study. *J Am Coll Cardiol* 76(25):2982–3021
- Münzel T, Hahad O, Sørensen M, Lelieveld J, Duerr GD, Nieuwenhuijsen M, Daiber A (2022) Environmental risk factors and cardiovascular diseases: a comprehensive expert review. *Cardiovasc Res* 118(14):2880–2902
- Lelieveld J, Klingmüller K, Pozzer A, Pöschl U, Fnais M, Daiber A, Münzel T (2019) Cardiovascular disease burden from ambient air pollution in Europe reassessed using novel hazard ratio functions. *Eur Heart J* 40(20):1590–1596
- Li Z, Liu M, Wu Z, Liu Y, Li W, Liu M, Lv S, Yu S, Jiang Y, Gao B et al (2022) Association between ambient air pollution and hospital admissions, length of hospital stay and hospital cost for patients with cardiovascular diseases and comorbid diabetes mellitus: base on 1,969,755 cases in Beijing, China, 2014–2019. *Environ Int* 165:107301
- Liang F, Liu F, Huang K, Yang X, Li J, Xiao Q, Chen J, Liu X, Cao J, Shen C et al (2020) Long-term exposure to fine particulate matter and cardiovascular disease in China. *J Am Coll Cardiol* 75(7):707–717
- Rajagopalan S, Al-Kindi SG, Brook RD (2018) air pollution and cardiovascular disease: JACC state-of-the-art review. *J Am Coll Cardiol* 72(17):2054–2070
- Li Z, Liu Q, Xu Z, Guo X, Wu S (2020) Association between short-term exposure to ambient particulate air pollution and biomarkers of oxidative stress: a meta-analysis. *Environ Res* 191:110105
- Tang H, Cheng Z, Li N, Mao S, Ma R, He H, Niu Z, Chen X, Xiang H (2020) The short- and long-term associations of particulate matter with inflammation and blood coagulation markers: a meta-analysis. *Environ Pollut* 267:115630
- Kaihara T, Yoneyama K, Nakai M, Higuma T, Sumita Y, Miyamoto Y, Watanabe M, Izumo M, Ishibashi Y, Tanabe Y et al (2021) Association of PM2.5 exposure with hospitalization for cardiovascular disease in elderly individuals in Japan. *Sci Rep* 11(1):1–8
- Ban J, Ma R, Zhang Y, Li T (2021) PM2.5-associated risk for cardiovascular hospital admission and related economic burdens in Beijing, China. *Sci Total Environ* 799:149445
- Wang X, Yu C, Zhang Y, Shi F, Meng R, Yu Y (2020) Attributable risk and economic cost of cardiovascular hospital admissions due to ambient particulate matter in Wuhan, China. *Int J Environ Res Public Health* 17(15):5453
- Aturinde A, Farnaghi M, Pilesjö P, Sundquist K, Mansourian A (2021) Spatial analysis of ambient air pollution and cardiovascular disease (CVD) hospitalization across Sweden. *Geohealth* 5(5):e2020GH000323
- Lu X, Lin C, Li Y, Yao T, Fung JC, Lau AK (2017) Assessment of health burden caused by particulate matter in southern China using high-resolution satellite observation. *Environ Int* 98:160–170
- Cao D, Li D, Wu Y, Qian ZM, Liu Y, Liu Q, Sun J, Guo Y, Zhang S, Jiao G et al (2021) Ambient PM(2.5) exposure and hospital cost and length of hospital stay for respiratory diseases in 11 cities in Shanxi Province, China. *Thorax* 76(8):815–820
- Wilson AM, Salloway JC, Wake CP, Kelly T (2004) Air pollution and the demand for hospital services: a review. *Environ Int* 30(8):1109–1118
- Wei J, Li Z, Xue W, Sun L, Fan T, Liu L, Su T, Cribb M (2021) The China-HighPM10 dataset: generation, validation, and spatiotemporal variations from 2015 to 2019 across China. *Environ Int* 146:106290
- Wei J, Li Z, Lyapustin A, Sun L, Peng Y, Xue W, Su T, Cribb M (2021) Reconstructing 1-km-resolution high-quality PM2.5 data records from 2000 to 2018 in China: spatiotemporal variations and policy implications. *Remote Sens Environ* 252:112136
- Wei J, Li Z, Guo J, Sun L, Huang W, Xue W, Fan T, Cribb M (2019) Satellite-derived 1-km-resolution PM1 concentrations from 2014 to 2018 across China. *Environ Sci Technol* 53(22):13265–13274
- Feng Y, Wei J, Hu M, Xu C, Li T, Wang J, Chen W (2022) Lagged effects of exposure to air pollutants on the risk of pulmonary tuberculosis in a highly polluted region. *Int J Environ Res Public Health* 19(9):5752
- Peng W, Li H, Peng L, Wang Y, Wang W (2022) Effects of particulate matter on hospital admissions for respiratory diseases: an ecological study based on 12.5 years of time series data in Shanghai. *Environ Health* 21(1):1–12
- Burns C, Sacks G, Gold L (2008) Longitudinal study of Consumer Price Index (CPI) trends in core and non-core foods in Australia. *Aust N Z J Public Health* 32(5):450–453
- Zonfrillo MR, Zaniletti I, Hall M, Fieldston ES, Colvin JD, Bettenhausen JL, Macy ML, Alpern ER, Cutler GJ, Raphael JL et al (2016) Socioeconomic status and hospitalization costs for children with brain and spinal cord injury. *J Pediatr* 169:250–255

25. Hastie T, Tibshirani R (1995) Generalized additive models for medical research. *Stat Methods Med Res* 4(3):187–196
26. Prata DN, Rodrigues W, Bermejo PH (2020) Temperature significantly changes COVID-19 transmission in (sub)tropical cities of Brazil. *Sci Total Environ* 729:138862
27. Bridgman C, Gerken J, Vincent J, Brooks AE, Zapata I (2022) Revisiting the COVID-19 fatality rate and altitude association through a comprehensive analysis. *Sci Rep* 12(1):18048
28. Huang H, Lin C, Liu X, Zhu L, Avellán-Llaguno RD, Lazo MML, Ai X, Huang Q (2022) The impact of air pollution on COVID-19 pandemic varied within different cities in South America using different models. *Environ Sci Pollut Res Int* 29(1):543–552
29. Chen C, Liu C, Chen R, Wang W, Li W, Kan H, Fu C (2018) Ambient air pollution and daily hospital admissions for mental disorders in Shanghai, China. *Sci Total Environ* 613–614:324–330
30. Altman DG, Bland JM (2003) Interaction revisited: the difference between two estimates. *BMJ* 326(7382):219
31. Wang X, Zhang L, Yao Z, Ai S, Qian ZM, Wang H, BeLue R, Liu T, Xiao J, Li X et al (2018) Ambient coarse particulate pollution and mortality in three Chinese cities: association and attributable mortality burden. *Sci Total Environ* 628–629:1037–1042
32. Sepandi M, Akbari H, Naseri MH, Alimohamadi Y (2021) Emergency hospital admissions for cardiovascular diseases attributed to air pollution in Tehran during 2016–2019. *Environ Sci Pollut Res* 28(28):38426–38433
33. Yang BY, Guo Y, Morawska L, Bloom MS, Markevych I, Heinrich J, Dharmage SC, Knibbs LD, Lin S, Yim SH et al (2019) Ambient PM1 air pollution and cardiovascular disease prevalence: insights from the 33 communities Chinese health study. *Environ Int* 123:310–317
34. Yin P, Guo J, Wang L, Fan W, Lu F, Guo M, Moreno SBR, Wang Y, Wang H, Zhou M et al (2020) Higher risk of cardiovascular disease associated with smaller size-fractioned particulate matter. *Environ Sci Technol Lett* 7(2):95–101
35. Wu H, Zhang B, Wei J, Lu Z, Zhao M, Liu W, Bovet P, Guo X, Xi B (2022) Short-term effects of exposure to ambient PM(1), PM(2.5), and PM(10) on ischemic and hemorrhagic stroke incidence in Shandong Province, China. *Environ Res* 212(Pt C):113350
36. Zha Q, Chai G, Zhang Z-G, Sha Y, Su Y (2022) Short-term effects of main air pollutants exposure on LOS and costs of CVD hospital admissions from 30,959 cases among suburban farmers in Pingliang, Northwest China. *Environ Sci Pollut Res* 29(33):50819–50831
37. Ishii M, Seki T, Kaikita K, Sakamoto K, Nakai M, Sumita Y, Nishimura K, Miyamoto Y, Noguchi T, Yasuda S et al (2020) Association of short-term exposure to air pollution with myocardial infarction with and without obstructive coronary artery disease. *Eur J Prev Cardiol* 28(13):1435–1444
38. Yang Y, Pun VC, Sun S, Lin H, Mason TG, Qiu H (2018) Particulate matter components and health: a literature review on exposure assessment. *J Public Health Emerg* 2:14–14
39. Chen R, Jiang Y, Hu J, Chen H, Li H, Meng X, Ji JS, Gao Y, Wang W, Liu C et al (2022) Hourly air pollutants and acute coronary syndrome onset in 1.29 million patients. *Circulation* 145(24):1749–1760
40. Wu T, Yang X, Chu A, Xie X, Bai M, Peng Y, Zhang Z (2022) Acute effects of fine particulate matter (PM2.5) on hospital admissions for cardiovascular diseases in Lanzhou, China: a time-series study. *Environ Sci Eur* 34(1):1–14
41. Tian Y, Liu H, Wu Y, Si Y, Song J, Cao Y, Li M, Wu Y, Wang X, Chen L et al (2019) Association between ambient fine particulate pollution and hospital admissions for cause specific cardiovascular disease: time series study in 184 major Chinese cities. *BMJ*. <https://doi.org/10.1136/bmj.16572>
42. Kim SR, Choi S, Kim K, Chang J, Kim SM, Cho Y, Oh YH, Lee G, Son JS, Kim KH et al (2021) Association of the combined effects of air pollution and changes in physical activity with cardiovascular disease in young adults. *Eur Heart J* 42(25):2487–2497
43. Tong L, Li K, Zhou Q (2016) Season, sex and age as modifiers in the association of psychosis morbidity with air pollutants: a rising problem in a Chinese metropolis. *Sci Total Environ* 541:928–933
44. Christofferson JG, Conklin JE, Gonnella J (1988) The impact of severity of illness on hospital costs. *DRG Monit* 6(1):1–8
45. Tian Y, Liu H, Wu Y, Si Y, Li M, Wu Y, Wang X, Wang M, Chen L, Wei C et al (2019) Ambient particulate matter pollution and adult hospital admissions for pneumonia in urban China: a national time series analysis for 2014 through 2017. *PLoS Med* 16(12):e1003010
46. Tsai SS, Chang CC, Liou SH, Yang CY (2014) The effects of fine particulate air pollution on daily mortality: a case-crossover study in a subtropical city, Taipei, Taiwan. *Int J Environ Res Public Health* 11(5):5081–5093
47. Mainka A, Zak M (2022) Synergistic or antagonistic health effects of long- and short-term exposure to ambient NO₂ and PM_{2.5}: a review. *Int J Environ Res Public Health* 19(21):14079
48. Orellano P, Reynoso J, Quaranta N, Bardach A, Ciapponi A (2020) Short-term exposure to particulate matter (PM(10) and PM(2.5)), nitrogen dioxide (NO(2)), and ozone (O(3)) and all-cause and cause-specific mortality: systematic review and meta-analysis. *Environ Int* 142:105876
49. Bourdrel T, Bind MA, Bejot Y, Morel O, Argacha JF (2017) Cardiovascular effects of air pollution. *Arch Cardiovasc Dis* 110(11):634–642
50. Roy A, Gong J, Thomas DC, Zhang J, Kipen HM, Rich DQ, Zhu T, Huang W, Hu M, Wang G et al (2014) The cardiopulmonary effects of ambient air pollution and mechanistic pathways: a comparative hierarchical pathway analysis. *PLoS ONE* 9(12):e114913
51. Miller MR, Raftis JB, Langrish JP, McLean SG, Samutrai P, Connell SP, Wilson S, Vesey AT, Fokkens PHB, Boere AJF et al (2017) Inhaled nanoparticles accumulate at sites of vascular disease. *ACS Nano* 11(5):4542–4552
52. Jia YY, Wang Q, Liu T (2017) Toxicity research of PM(2.5) compositions in vitro. *Int J Environ Res Public Health* 14(3):232
53. Kampfrath T, Maiseyeu A, Ying Z, Shah Z, Deiluiis JA, Xu X, Kherada N, Brook RD, Reddy KM, Padture NP et al (2011) Chronic fine particulate matter exposure induces systemic vascular dysfunction via NADPH OXIDASE and TLR4 pathways. *Circ Res* 108(6):716–726
54. Guo H, Li X, Wei J, Li W, Wu J, Zhang Y (2022) Smaller particular matter, larger risk of female lung cancer incidence? Evidence from 436 Chinese counties. *BMC Public Health* 22(1):344

Publisher's Note

Springer Nature remains neutral with regard to jurisdictional claims in published maps and institutional affiliations.

Submit your manuscript to a SpringerOpen[®] journal and benefit from:

- Convenient online submission
- Rigorous peer review
- Open access: articles freely available online
- High visibility within the field
- Retaining the copyright to your article

Submit your next manuscript at ► [springeropen.com](https://www.springeropen.com)