

RESEARCH

Open Access



Land use alters cross-ecosystem transfer of high value fatty acids by aquatic insects

Katharina Ohler^{1*}, Verena C. Schreiner¹, Lukas Reinhard¹, Moritz Link¹, Matthias Liess^{2,3}, Werner Brack^{4,5} and Ralf B. Schäfer¹

Abstract

Background Many aquatic insects emerge as adults from water bodies to complete parts of their life cycle in terrestrial ecosystems and are potential prey for riparian predators. The benefits of riparian predators from aquatic insects include higher contents of long-chain polyunsaturated fatty acids (PUFA) compared to terrestrial insects. Aquatic insects are therefore considered a high-quality food. Food containing high levels of PUFA can enhance growth and immune response of spiders. However, agricultural stressors like nutrient increase, pesticides and habitat degradation can affect the biomass of aquatic insects and in turn the diet of spiders. Studies quantifying the influence of land use on fatty acid (FA) profiles of emergent aquatic insects and riparian predators are lacking. We quantified differences in exports of FA, saturated FA, monounsaturated FA, and PUFA, FA profiles of aquatic insects and spiders between forested and agricultural sites over the primary emergence period within one year. The FA export to the riparian food web is crucial to understand energy fluxes between ecosystems. Furthermore, we monitored environmental variables to identify associations between agricultural stressors and FA profiles of aquatic insects and spiders.

Results We found differences in FA export and profiles of aquatic insects between land-use types. The quantity of total FA export via aquatic insects was lower in agricultural sites (95% CI 1147–1313 $\mu\text{g m}^{-2}$) in comparison to forested sites (95% CI 1555–1845 $\mu\text{g m}^{-2}$), while the biomass export was higher in agricultural sites. Additionally, in spring the PUFA export was significantly lower (up to 0.06 $\mu\text{g d}^{-1} \text{m}^{-2}$) in agricultural than forested sites. Agricultural stressors explained only little variation in the FA profiles of aquatic insects, e.g., 4% for caddisflies and 12% for non-biting midges. Percentage of shading and pool habitats were identified as most important variables explaining the variation in FA profiles.

Conclusion The quality of aquatic insects as food source for riparian spiders was smaller in agricultural than forested sites, which can decrease the fitness of riparian predators. To improve our capacity to predict potential adverse effects in the riparian food web, future studies should identify the mechanisms underlying a lower PUFA content.

Keywords Agriculture, Forest, Fatty acid profiles, Emergent aquatic insects, Spiders

*Correspondence:

Katharina Ohler
frisch@uni-landau.de

Full list of author information is available at the end of the article



© The Author(s) 2023. **Open Access** This article is licensed under a Creative Commons Attribution 4.0 International License, which permits use, sharing, adaptation, distribution and reproduction in any medium or format, as long as you give appropriate credit to the original author(s) and the source, provide a link to the Creative Commons licence, and indicate if changes were made. The images or other third party material in this article are included in the article's Creative Commons licence, unless indicated otherwise in a credit line to the material. If material is not included in the article's Creative Commons licence and your intended use is not permitted by statutory regulation or exceeds the permitted use, you will need to obtain permission directly from the copyright holder. To view a copy of this licence, visit <http://creativecommons.org/licenses/by/4.0/>.

Background

Globally, intensive agriculture is a major land-use type [1]. In agricultural areas, stream ecosystems are threatened by enhanced nutrient inputs, pesticides and habitat degradation, which in turn jeopardizes biodiversity and human water security [2–4].

Stream ecosystems and adjacent terrestrial ecosystems are closely connected via the exchange of matter and organisms [5]. Many aquatic insects, e.g., Ephemeroptera (mayflies), Plecoptera (stoneflies), Trichoptera (caddisflies) and some Diptera (flies) emerge as adults from water bodies into terrestrial ecosystems. There, they are potential prey for riparian predators like spiders, birds and bats [6–8]. Additionally, agriculture is linked to the loss of terrestrial invertebrates [9–11]. Therefore, riparian predators can benefit from aquatic insects complementing the food source of terrestrial invertebrates [12–14].

Furthermore, aquatic insects are considered a high-quality food source, because they typically contain elevated levels of fatty acids (FA) compared to terrestrial insects [15–17]. Especially, levels of polyunsaturated FA (PUFA) of aquatic insects can be ten times higher than in terrestrial insects [15, 16]. These differences originate from the base of the food web propagating to higher trophic levels: aquatic primary producers like diatoms are capable of synthesizing long-chain PUFA [18–20], while terrestrial vascular plants cannot [21]. Additionally, many animals are not able to produce PUFA *de novo* and therefore depend on dietary intake of these compounds [22]. Animals like some bird and spider species that can synthesize PUFA still are constrained by high energetic costs and, thus, may only produce PUFA in the absence of other sources [22–24]. Consequently, food containing high levels of long-chain PUFA has been shown to enhance growth and immune response of spiders and birds [25, 26]. Furthermore, FA in general have been linked to the increased growth of spiders [27].

Emergence of aquatic insects is variable over time and reveals seasonal patterns [28, 29] and it has been shown that the timing of emergence can control growth rate, population biomass and maturity rate of terrestrial predators [30, 31]. Therefore, accounting for temporal dynamics is important when aiming to predict effects of total FA export via aquatic insects to terrestrial ecosystems [32].

It is known that agricultural stressors like increased nutrient concentration in stream water, pesticides and habitat degradation affect aquatic insects, e.g., by changing the composition of aquatic insect assemblages [14, 29] and increasing or decreasing their biomass, depending on the aquatic insect order [29, 33]. Furthermore, agricultural stressors can affect riparian spiders by altering the amount of aquatic insects in their diet [12], reducing their richness as well as abundance [34].

Most studies thus far have focused on PUFA profiles of aquatic insects and riparian predators without considering potential effects of agricultural stressors (e.g., [16, 17, 24, 35, 36]). One mesocosm study on Chironomidae (non-biting midges), including nutrient elevation and predation, found that FA export was highest at intermediate phosphate concentrations and that biomass of non-biting midges was the best predictor for FA export [37]. However, under laboratory conditions, with toxicant exposure (copper, pesticides, *Bacillus thuringiensis* var. *israelensis*) during larval stages of non-biting midges, no effect on FA profiles of adult non-biting midges and a tendency to decreased FA content in spiders was found [38]. Similarly, one field study on emergent aquatic insects in two streams included stream-bed characteristics and physicochemical variables like nutrients, but did not find an association of these variables with the FA profiles of aquatic insects [39]. In a field study, conducted in agricultural and forested streams focusing on vegetation (herbaceous and woody), the taxonomy of spiders at family level was the best predictor for FA content of spiders [40].

To our knowledge, field studies that quantified the influence of land use and associated stressors on FA profiles of emergent aquatic insects and riparian predators as well as FA export via aquatic insects are lacking. However, this would be important to estimate the effect of changing quality in terms of FA export to the riparian food web, which is crucial to understand energy fluxes between ecosystems and to predict effects on the subsidized food web [41–43]. Therefore, we aimed to quantify differences in total FA export and FA profiles of aquatic insects as well as riparian spiders between forested and agricultural sites of ten streams over the primary emergence period within one year (March–September). As spiders can prey on emergent aquatic insects, their FA profiles may be affected by changes in FA profiles of emergent aquatic insects. We collected emergent aquatic insects and riparian spiders and measured their FA profiles. In addition, we monitored a range of environmental variables to identify potential associations between agricultural stressors and the FA profiles of aquatic insects and spiders. We compared (1) total FA export via aquatic insects between both land-use types; (2) FA profiles of aquatic insects and spiders between agricultural and forested sites and (3) examined associations between agricultural stressors and the FA profiles of aquatic insects and spiders.

Methods

Study sites

To cover the primary emergence period [44], our study was conducted from 22nd March to 13th September

2018 in south-western Germany. In 10 parallel, fine substrate-dominated, mostly small, first and second order highland streams, an upstream forested site and a downstream site where agricultural land use dominated were selected (Additional file 1: Figure S1). The mean distance between the upstream and downstream sites within a stream was 5.5 (range: 1.4–14.0) km and the maximum distance between parallel streams was 50 km. All streams originated in the Palatinate Forest, a forested low mountain range. The sites were mostly free from large wastewater treatment plants and industrial facilities. Viticulture was the main agricultural land use. It has been shown that environmental variables were similar across different types of agricultural land use including viticulture, cereals and corn in this region [45]. The stream size and order of all study sites was comparable, for details see Ohler et al. [29].

Agricultural stressors associated with FA profiles

We recorded physicochemical variables every three weeks and hydromorphological structure in March, July, and August to determine land-use-related variables associated with FA profiles of aquatic insects and riparian spiders. For instance: electrical conductivity (EC), nitrate concentration, air and water temperature, oxygen saturation, the percentage of pool habitats and the percentage of shading (Additional file 1: Table S1). Furthermore, in-stream pesticide concentrations were determined from 49 event-driven samples taken during heavy rainfall events and 85 grab samples taken every three weeks. Glass bottle samplers [46] and automated samplers (MAXX TP5, Rangendingen, Germany) took event-driven samples whenever the water level increased more than 5 cm. The samples were filtered (either automatically on site or manually in the lab) to retain particles, which were then analyzed for pesticides bound on particles. More information on pesticide sampling, analysis and exposure are described in Halbach et al. [47] and Liess et al. [48, 49].

The pesticide class of pyrethroids typically enters streams bound on particles [50] and has a high relative toxicity for aquatic insects [51, 52]. Therefore, the concentration of pesticides bound on particles in event samples was used to estimate the bioavailable concentration in water c_d following Schäfer et al. [53] and Toro et al. [54] with the equation:

$$c_d = \frac{c_{\text{tot}}}{f_{\text{oc}} \cdot k_{\text{oc}} + 1}, \quad (1)$$

where f_{oc} is the fraction of organic carbon in the sample, c_{tot} is the total concentration on the suspended particles, and k_{oc} is the soil organic carbon–water partitioning coefficient, which was extracted from the Pesticide

Property Data Base (PPDB, [55]) and PubChem [56] database (Additional file 1: Table S2).

The logarithmic sum of toxic units (sumTU) was calculated to estimate the toxicity of the pesticide mixture [57]:

$$\text{sumTU} = \log \sum_{i=1}^n \frac{c_i}{\text{EC}_{50i}}, \quad (2)$$

where c_i is the concentration of the single pesticide, EC_{50i} the acute effect concentration of the pesticide towards the most sensitive freshwater invertebrate species, and n is the number of pesticides. The R package Standartox (version 0.0.1, Scharmüller et al. [58]) was used to compile the EC_{50} values from the ECOTOX database [59]. If the EC_{50} values were missing in Standartox, the values were complemented from the PPDB [55] or Malaj et al. [60] (Additional file 1: Table S3). The maximum pesticide toxicity (maximum sumTU of all samplings per site and season; hereafter pesticide toxicity) was used in the analysis, because it may be responsible for the strongest ecological response.

Spider and aquatic insect sampling

We chose *Tetragnatha* sp. to determine effects of FA in aquatic–terrestrial food webs, as these spiders frequently colonize riparian areas and prey on aquatic insects [7] with orb webs spanning over streams [61]. Whenever feasible only female and adult spiders of the species *T. montana* were collected to minimize variation in feeding, because feeding differs between and within spider species [62]. In the subsequent FA analysis 73% of the spiders were adult female *T. montana*, for more details see Ohler et al. [63]. Up to ten spiders were gathered with a maximum distance of 1 m from the stream by hand in spring (14th–16th May 2018), summer (16th–19th, 23rd, 26th July 2018) and autumn (10th–13th September 2018).

Emergence traps with a basal area of 0.25 m² and a bottle trap without any solution [64] were used to sample aquatic insects continuously. Two traps were installed at every site covering pool and riffle habitats. This sampling method likely underestimated the fraction of stoneflies that emerge by walking on the banks. As previous studies estimated only < 1% to 3% [65, 66] of aquatic emergent insects returning to water bodies, we assume that most sampled aquatic insects would have reached the riparian area. Twice a week the traps were emptied by replacing the bottle trap.

The spiders as well as aquatic insects were transported on ice until they were euthanized in liquid nitrogen and identified in the laboratory on ice. Under a stereo microscope, spiders were identified to species level using the key by Roberts [67] and aquatic insects to family level

with the following keys Bährmann and Müller [68], Nilsson [69, 70], Schäfer and Brohmer [71]. Subsequently, spiders and aquatic insects were lyophilized to complete dryness and weighed to the nearest 0.1 µg.

FA analysis

For FA analysis the major orders of aquatic insects, i.e., mayflies, stoneflies, caddisflies and flies, were chosen. In total 21 FA with 18 or more carbon atoms were included in the analysis. Since non-biting midges (Chironomidae) dominated the emergence of flies (Diptera) [29], only their FA profiles were analyzed. The samples of aquatic insects collected over approximately two weeks (Additional file 1: Table S4) were pooled on order level prior to analysis, which is commonly done in FA analysis (e.g., [35, 39]). An analysis on family level would have exceeded financial and labor capacities, though FA profiles may differ across families [37]. Hence, the FA analysis at order level will reflect the FA profiles of the families present in one site.

After the addition of an internal standard (C17:0 200 µg mL⁻¹; C23:0 250 µg mL⁻¹, Sigma-Aldrich) the FA of all samples were extracted following Folch et al. [72] with chloroform/methanol (GC-grade, 5 mL, v:v; 2:1) at -20 °C over night. Then the samples were filtered with a syringe filter (PTFE, 13 mm, 0.45 µm, BGB), evaporated until dryness at 40 °C under nitrogen and redissolved in methanol. The volume of methanol depended on the weight of the sample (maximum ratio of weight to volume: 3:10), for details see Ohler et al. [73]. All samples were stored under nitrogen at -20 °C until derivatization. Methanolic trimethylsulfonium hydroxide (TMSH, 0.2 M, 10 µL, Macherey–Nagel) was used to derivatize FA to fatty acid methyl esters (FAME) in the sample (20 µL) at room temperature for 60 min. A gas chromatograph with a flame ionization detector (Varian CP-3800, Varian Inc) equipped with a DB-225 capillary column (30 m×0.25 mm×0.25 µm, Agilent J&W) was used to analyze FAME. The FAME were identified and quantified with external standards (Supelco 37 component FAME mix, 18:1n-7 FAME, ALA FAME, Sigma-Aldrich). OpenChrom [74] was used for identification and R (version 4.2.0 [75]) for quantification. Further details are given in Ohler et al. [73].

Data analysis

Comparing FA export between agricultural and forested sites

The export of FA, saturated fatty acids (SFA), mono-unsaturated fatty acids (MUFA) and PUFA via aquatic insects was assessed with hierarchical generalized additive models (HGAM) following Pedersen et al. [76]. This gives information about the amount of these compounds available for riparian predators. HGAM allow to identify

seasonal patterns of FA, SFA, MUFA and PUFA export as well as differences between land-use types in the amount exported. The sum of all FA, SFA, MUFA and PUFA of aquatic insects in total as well as on order level were used in the HGAM. The export of FA, SFA, MUFA and PUFA was normalized for the sampling area and duration. Group-level smoothers without a global smoother for land use and land use crossed with order were applied. That means each group could differ in its shape without restriction. HGAM including one smoothing parameter for all group levels (model S, same wiggleness) yielded lower Bayesian Information Criterion (BIC, Additional file 1: Table S5) than HGAM fitted with one smoothing parameter for every group level (model I, different wiggleness). Additionally, stream was incorporated as random effect smoother. The HGAM were fitted with the R-package mgvc (version 1.8–36 [77]). The effect of land use was quantified with the 95% confidence interval (CI) of the difference between the mean fit (mean per time point) for forest and agriculture. At $\alpha=0.05$ non-overlapping CI were considered statistically significant. Furthermore, the mean export of FA, SFA, MUFA and PUFA per area over the whole sampling period was estimated by using the mean fits of the HGAM in forest as well as agriculture. The temporal resolution of agricultural stressors was too low to include them in model selection in HGAM.

Comparing FA profiles between agricultural and forested sites

To identify differences in the FA profiles between land-use types, in every season, FA profiles (FA ≥ 18 carbon atoms) of aquatic insects, i.e., mayflies, stoneflies, caddisflies, non-biting midges, and spiders between forested and agricultural sites were compared with analysis of similarity (ANOSIM; 999 permutations, Euclidean distance, R-package vegan version 2.5–7 [78]). For this purpose, the content of a single FA was calculated as the proportion of the total FA content (proportion of FA) to assess potential effects of land use on the FA profiles. In autumn, a comparison of FA profiles of stoneflies between land-use types was not possible, because no stoneflies were caught in agricultural sites during autumn. The p -values were adjusted with the Benjamini–Hochberg method [79] to decrease the false discovery rate in multiple testing. Similarity percentage (SIMPER) analyses with the R-package vegan version 2.5–7 [78] were conducted whenever ANOSIM resulted in significant differences between land-use types to identify the specific FA contributing to the differences.

Agricultural stressors associated with FA profiles

Redundancy analysis (RDA) was conducted to identify agricultural stressors associated with changes in FA

profiles of aquatic insects and spiders. For this purpose, the mean of each FA (expressed as proportion of total FA) and environmental variables per season was calculated for spiders and aquatic insects in total. The proportion of single FA was used to determine, if agricultural stressors were in general associated with FA profiles. Furthermore, the mean of each FA per season was calculated for single orders mayflies, stoneflies, caddisflies and non-biting midges. The latter was done, because data aggregation may hamper the identification and evaluation of associations with stressors [29, 80]. We chose pesticide toxicity, percentage of shading, EC, oxygen saturation, percentage of pool habitats, phosphate and nitrate concentration as well as air and water temperature as variables potentially expressing agricultural influence based on the results of previous studies in the region [45, 81, 82]. Additionally, we included the variables stream and season. Water temperature and EC were only included in RDA for aquatic insects and air temperature only in RDA for spiders. Furthermore, the biomass of aquatic insects was included in RDA for spiders only. The variables were chosen a priori. Temperature is known to affect FA profiles of organisms, because, for example with rising temperature, organisms can modify their PUFA content to decrease fluidity of cell membranes [83, 84]. Shading, phosphate and nitrate concentration can affect primary producers and in turn the trophic transfer of FA by altering the food availability for aquatic insects [14, 85–87]. Furthermore, the variables considered in this study can affect the biomass, abundance, and assemblage composition of aquatic insects [12, 14, 29, 33] and the diet, abundance, as well as assemblage composition of spiders [12, 34]. The biomass of aquatic insects determines the potential amount of prey with aquatic origin for spiders [12]. Before the analysis the environmental variables were checked for collinearity. No collinearity was present (highest $r=0.5$) and all environmental variables were independent from each other. Additionally, the variables were standardized, which includes mean centering and standardization to unit variance. Variable selection for the agricultural stressors was conducted with automatic forward stepwise model selection using the maximization adjusted R^2 (ordiR2step, R-package vegan version 2.5–7 [78]). Stream and season were included in the starting model. After model selection a partial RDA with stream and season as covariates was conducted to identify the variation in FA profiles originating only from the agricultural stressors. All data analysis was conducted with R [75] and figures were generated with the R-package ggplot2 version 3.4.1 [88]. The R code and data are available [63].

Results

Comparing FA export between agricultural and forested sites

Overall, 1555–1845 $\mu\text{g m}^{-2}$ (95% CI) FA, 425–516 $\mu\text{g m}^{-2}$ SFA, 178–204 $\mu\text{g m}^{-2}$ MUFA, and 942–1114 $\mu\text{g m}^{-2}$ PUFA were exported in forested and 1147–1313 $\mu\text{g m}^{-2}$ FA, 329–403 $\mu\text{g m}^{-2}$ SFA, 135–151 $\mu\text{g m}^{-2}$ MUFA, and 670–744 $\mu\text{g m}^{-2}$ PUFA in agricultural sites over the study period (Additional file 1: Table S6). Differences between land-use types in FA, SFA, and MUFA export were not significant (i.e., non-overlapping 95% CI at $\alpha=0.05$) over the whole study period for individual time points (Fig. 1a–c). However, during spring the PUFA export was significantly higher (up to 0.06 $\mu\text{g d}^{-1} \text{m}^{-2}$) in forested than agricultural sites (Fig. 1d). The FA, SFA, MUFA and PUFA export was highest in spring and decreased until autumn in both land-use types and the seasonal patterns of these compounds were similar within land-use types (Fig. 1a–d).

In autumn, the FA, SFA, MUFA, and PUFA export at single time points of mayflies was significantly higher in forested than agricultural sites (Fig. 2a, e, i, m), the latter approximately 0.01 $\mu\text{g d}^{-1} \text{m}^{-2}$. The FA, SFA, MUFA as well as PUFA export of mayflies peaked during spring in both land-use types (Fig. 2a, e, i, m), but individual time points were not significantly different.

In contrast, the FA, SFA, MUFA, and PUFA export via non-biting midges was significantly higher in forested than agricultural sites during spring and the beginning of summer (Fig. 2b, f, j, n). The FA export ranged from 0.04 (± 0.02) to 0.08 (± 0.04) $\mu\text{g d}^{-1} \text{m}^{-2}$ (mean fit HGAM ± 2 standard errors) and from 0.02 (± 0.01) to 0.03 (± 0.02) $\mu\text{g d}^{-1} \text{m}^{-2}$, respectively. In both land-use types FA, SFA, MUFA, and PUFA export via non-biting midges reached its minimum in summer.

The export of FA, MUFA, and PUFA via caddisflies was significantly higher in agricultural than forested sites during autumn, but no significant differences at individual time points were observed for SFA export via caddisflies (Fig. 2c, g, k, o). In agricultural sites the FA export of caddisflies ranged from 0.05 (± 0.02) to 0.007 (± 0.03) $\mu\text{g d}^{-1} \text{m}^{-2}$, and the PUFA export from 0.04 (± 0.01) to 0.05 (± 0.02), whereas the FA export of caddisflies ranged from 0.02 (± 0.02) to 0.03 (± 0.01) $\mu\text{g d}^{-1} \text{m}^{-2}$, and the PUFA export was approximately 0.02 $\mu\text{g d}^{-1} \text{m}^{-2}$ in forested sites. Additionally, in summer the FA export of caddisflies peaked at 0.07 (± 0.03) $\mu\text{g d}^{-1} \text{m}^{-2}$ in agricultural sites, while in forested sites a plateau around 0.05 $\mu\text{g d}^{-1} \text{m}^{-2}$ was observed in summer (Fig. 2c).

Starting at the second half of spring at single time points, the FA, SFA, MUFA, and PUFA export via stoneflies was significantly higher in agricultural

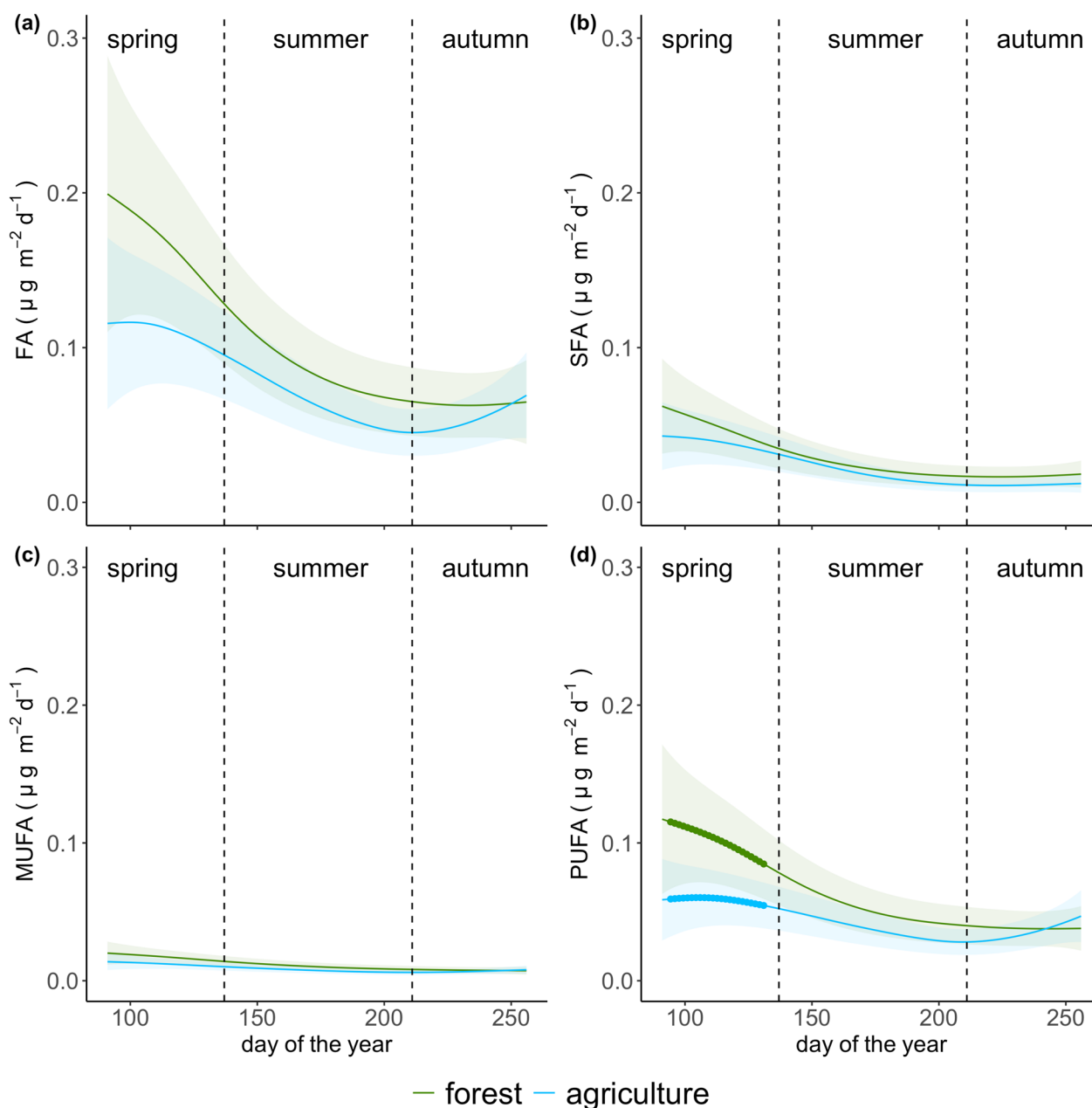


Fig. 1 Modeled seasonal patterns of fatty acid (FA), saturated fatty acid (SFA), monounsaturated fatty acid (MUFA) and polyunsaturated fatty acid (PUFA) export from streams of the total emergence including non-biting midges, mayflies, stoneflies, and caddisflies. The values were derived with hierarchical generalized additive models (HGAM) fitted with 354 observations. Solid lines represent the predicted mean fit values of the HGAM, and the ribbon shows ± 2 standard errors around the mean fit. Dots indicate significant differences (non-overlapping 95% confidence intervals at $\alpha = 0.05$) between agricultural and forested sites. Blue shows the seasonal patterns in agriculture and green in forest for **a** FA export, **b** SFA export, **c** MUFA export, and **d** PUFA export. Seasons: spring: 18th March–16th May, summer: 17th May–26th July, autumn: 27th July–13th September

than forested sites, though in forested sites the maximum FA export $0.02 (\pm 0.01) \mu\text{g d}^{-1} \text{m}^{-2}$ (beginning of spring) was the same as the maximum FA export $0.02 (\pm 0.01) \mu\text{g d}^{-1} \text{m}^{-2}$ (end of spring) in agricultural sites (Fig. 2d, h, l, p).

Comparing FA profiles between agricultural and forested sites

We did not find differences in FA profiles of spiders and stoneflies between agricultural and forested sites (Table 1, Additional file 1: Figure S2). FA profiles of

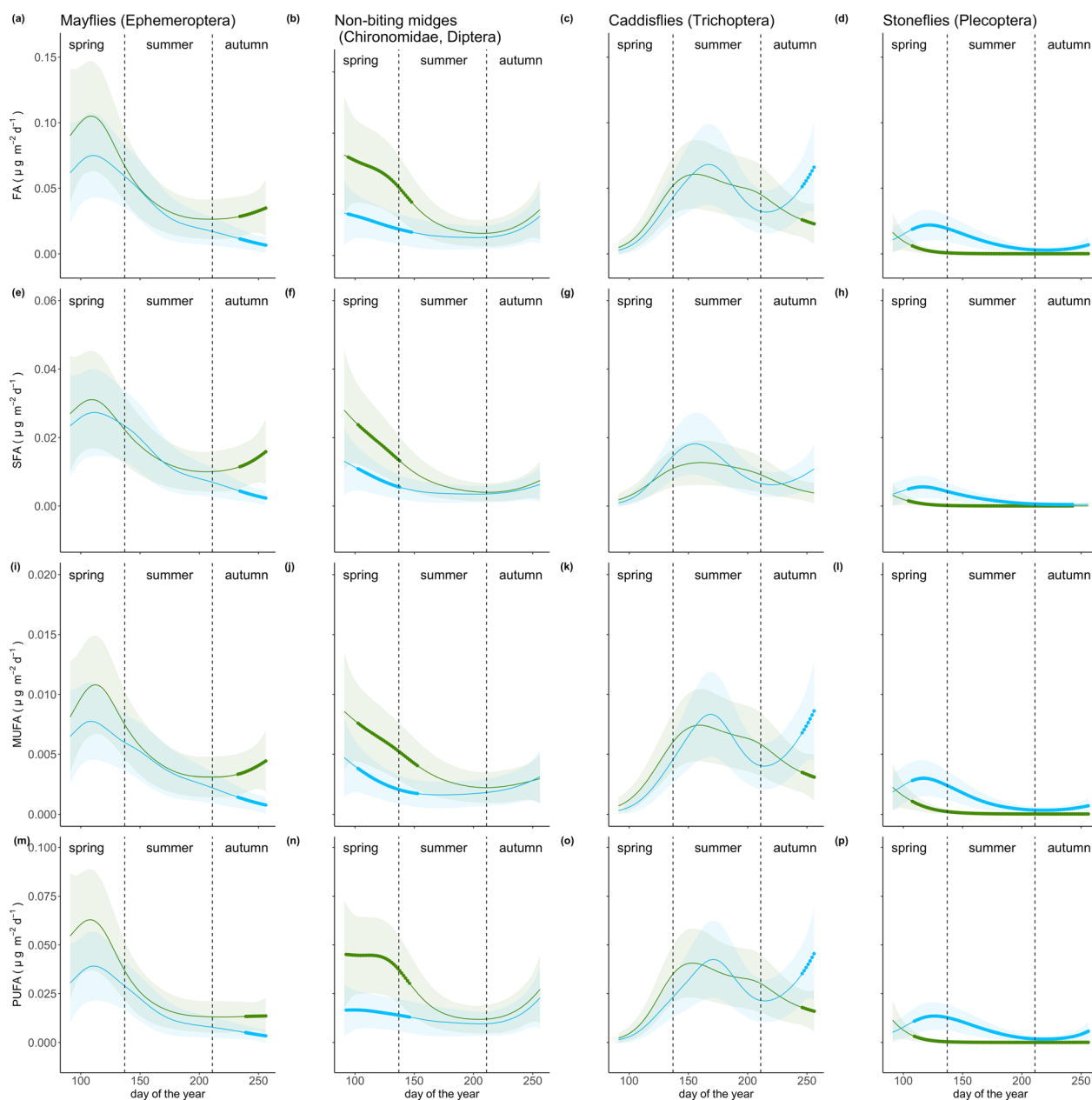


Fig. 2 Modeled seasonal patterns of fatty acid (FA), saturated fatty acid (SFA), monounsaturated fatty acid (MUFA) and polyunsaturated fatty acid (PUFA) export from streams of aquatic insect orders. The values were derived with hierarchical generalized additive models (HGAM) fitted with 998 observations. Solid lines represent the predicted mean fit values of the HGAM, and the ribbon shows ± 2 standard errors around the mean fit. Dots indicate significant differences (non-overlapping 95% confidence intervals at $\alpha = 0.05$) between agricultural and forested sites. Blue shows the seasonal patterns in agriculture and green in forest for **a, e, i, m** mayflies, **b, f, j, n** non-biting midges, **c, g, k, o** caddisflies, and **d, h, l, p** stoneflies. Seasons: spring: 18th March–16th May, summer: 17th May–26th July, autumn: 27th July–13th September. Beware that the y-axis scale varies

mayflies (ANOSIM: $R = 0.13$, p -value = 0.014) exhibited significant differences (i.e., p -value < 0.05) between land-use types in spring (Table 1). The FA eicosapentaenoic acid (20:5n-3, EPA), alpha-linolenic acid (18:3n-3, ALA), linoleic acid (18:2n-6c, LIN), elaidic acid (18:1n-9t, ELA),

octadecanoic acid (18:0, ODA) and eicosanoic acid (20:0, EA) contributed most to these differences (Table 2). All of these FA, except EPA, tended to have higher proportions in mayflies in forested than agricultural sites (Table 2, Additional file 1: Figure S2). Additionally, these

Table 1 Results of the analysis of similarities (ANOSIM) for the fatty acid (FA) profiles

Organism group	Season	R	p-value	Sample size
Spiders	Spring	-0.02	0.858	91
	Summer	-0.02	0.858	52
	Autumn	0.02	0.858	87
Mayflies	Spring	0.13	0.014	58
	Summer	0.08	0.06	69
	Autumn	0.07	0.858	32
Stoneflies	Spring	-0.16	0.858	20
	Summer	0.14	0.858	14
Caddisflies	Spring	0.15	0.504	16
	Summer	0.1	0.026	69
	Autumn	0.05	0.858	39
Non-biting midges	Spring	0.12	0.036	65
	Summer	0.1	0.06	76
	Autumn	-0.01	0.858	55

Spiders and aquatic insects per order were compared within the same season between forested and agricultural sites. The Benjamini-Hochberg method was used to adjust the p-values. Since stoneflies were not caught in agriculture in autumn, no ANOSIM could be conducted. Differences between forested and agricultural sites were indicated by R values: $R < 0.25$ barely separated, $R < 0.5$ clearly separated with some overlap, $R > 0.75$ well separated [89]. $R < 0$ greater dissimilarity within than between groups [90]. Bold values indicate significant p-values (i.e., p-values < 0.05)

FA explained between 22% (EPA) and 6% (ELA, LIN) of the differences.

The FA profiles of non-biting midges differed significantly between land-use types in spring (ANOSIM: $R = 0.12$, $p\text{-value} = 0.036$, Table 1). The FA contributing most to these differences were: gamma-linolenic acid (18:3n-6, GLA), ALA, EPA, ODA and EA, of which GLA explained most of the differences (21%) and EA the least (7%, Table 2). GLA, ODA and, EA tended to reach higher proportions in non-biting midges in forested than agricultural sites, while ALA and EPA tended to have higher proportions in aquatic insects in agricultural than forested sites (Table 2, Additional file 1: Figure S2).

Furthermore, in summer caddisflies revealed significant differences in FA profiles between forested and agricultural sites (ANOSIM: $R = 0.1$, $p\text{-value} = 0.026$, Table 1). ALA, EPA, LIN, EA, ODA and GLA contributed most to these differences. The former three FA tended to have higher proportions in caddisflies in agricultural sites than forested sites and the latter three FA in forested sites (Table 2, Additional file 1: Figure S2). Overall, these FA explained between 20% (ALA) and 7% (LIN) of the differences in FA profiles of caddisflies between land-use types (Table 2).

Table 2 Results of similarity percentage (SIMPER) analyses conducted when significant differences between forested and agricultural sites in fatty acid (FA) profiles were found with analysis of similarity (ANOSIM)

Order	Season	FA	Average	Standard deviation	Ratio	Average agriculture	Average forest	Cumulative contribution	Single contribution
Mayflies	Spring	EPA	0.09	0.06	1.51	0.31	0.19	0.22	0.22
		ALA	0.05	0.05	0.99	0.09	0.12	0.35	0.13
		ODA	0.05	0.05	1.13	0.23	0.27	0.48	0.13
		EA	0.04	0.04	1.08	0.05	0.10	0.58	0.10
		ELA	0.03	0.03	0.82	0.03	0.05	0.64	0.06
		LIN	0.03	0.03	0.89	0.07	0.08	0.70	0.06
Caddisflies	Summer	ALA	0.09	0.06	1.36	0.22	0.16	0.20	0.20
		EPA	0.06	0.05	1.33	0.21	0.17	0.34	0.14
		EA	0.05	0.04	1.33	0.10	0.15	0.47	0.13
		ODA	0.05	0.05	1.13	0.11	0.16	0.59	0.12
		GLA	0.04	0.03	1.16	0.06	0.08	0.68	0.09
		LIN	0.03	0.02	1.22	0.05	0.04	0.75	0.07
Non-biting midges	Spring	ALA	0.1	0.07	1.39	0.22	0.19	0.20	0.20
		GLA	0.1	0.08	1.19	0.11	0.21	0.41	0.21
		EPA	0.08	0.05	1.40	0.18	0.06	0.57	0.16
		ODA	0.05	0.04	1.27	0.24	0.25	0.68	0.11
		EA	0.03	0.03	1.19	0.06	0.07	0.75	0.07

Average is the contribution of FA to the average between-group dissimilarity, ratio is the average to standard deviation ratio, average agriculture is the average abundance in agricultural sites and average forest the average abundance in forested sites. FA with the closest higher cumulative contribution to 0.7 are presented. EPA eicosapentaenoic acid (20:5n-3), ALA alpha-linolenic acid (18:3n-3), GLA gamma-linolenic acid (18:3n-6), LIN linoleic acid (18:2n-6c), ELA elaidic acid (18:1n-9t), ODA octadecanoic acid (18:0), EA eicosanoic acid (20:0)

Agricultural stressors associated with FA profiles

The partial RDA (first axis: $F=3.7062$, p -value=0.025, second axis: $F=1.9292$, p -value=0.359) of the FA profiles of all analyzed aquatic insects (non-biting midges, mayflies, stoneflies, caddisflies) included water temperature, EC, percentage of pool habitats, oxygen saturation as well as percentage of shading (Fig. 3a) and explained 5% of the variation in FA profiles (Additional file 1: Table S7). For instance, FA profiles of aquatic insects of forested sites were associated with increasing percentage of shading and FA profiles of aquatic insects of agricultural sites with increasing percentage of pool habitats.

In the final partial RDA (first axis: $F=7.5766$, p -value=0.007, second axis: $F=3.2750$, p -value=0.084), the variables oxygen saturation, phosphate as well as nitrate concentration, EC, water temperature, percentage of pool habitats and shading, explained 12% of the variation of FA profiles of non-biting midges (Fig. 3b, Additional file 1: Table S7). Increasing percentage of shading and oxygen saturation were associated with FA profiles of non-biting midges in forested sites.

No RDA axes (first axis: $F=2.8377$, p -value=0.152, second axis: $F=1.7128$, p -value=0.431) were significant for mayflies and stoneflies (first axis: $F=1.7548$, p -value=0.249, second axis: $F=1.0624$, p -value=0.419). The agricultural stressors EC, pesticide toxicity, phosphate as well as nitrate concentration were selected for the final partial RDA for mayflies and percentage of shading and phosphate concentration for stoneflies (Fig. 3c, d). The agricultural stressors explained for mayflies and stoneflies 6% of the variation in FA profiles (Additional file 1: Table S7).

For caddisflies, the final partial RDA (first axis: $F=2.9864$, p -value=0.023, second axis: $F=0.9749$, p -value=0.784) contained percentage of pool habitats, pesticide toxicity and shading (Fig. 3e), though only 4% of variation were explained by the agricultural stressors (Additional file 1: Table S7). Pesticide toxicity was associated with the FA profiles of aquatic insects in agricultural sites.

For spiders no RDA axes were significant (first axis: $F=2.4217$, p -value=0.253, second axis: $F=2.1278$, p -value=0.230) and air temperature, percentage of shading, phosphate as well as nitrate concentration explained 3% in the variation of the FA profiles in the partial RDA (Fig. 3f).

Discussion

Comparing FA export between agricultural and forested sites

The export of total FA of aquatic insects was approximately 26–29% higher in forested than agricultural sites, although the biomass of aquatic insects was 61–68%

higher in agricultural than forested sites [29]. At individual time points only significant differences of the total PUFA export were observed: in spring more PUFA were exported in forested than agricultural sites. In contrast, at individual time points the biomass of aquatic insects was higher in agricultural than forested sites in spring [29]. Additionally, the biomass of non-biting midges and mayflies was higher in agricultural than forested sites [29], while the FA, SFA, MUFA and PUFA export via non-biting midges and mayflies was higher in forested than agricultural sites. This indicates that the FA, SFA, MUFA, as well as PUFA content in aquatic insects is lower in agricultural than forested sites, and in turn the quality of aquatic insects in terms of FA, SFA, MUFA and PUFA export is decreased in agricultural sites in comparison to forested sites.

The agricultural site was always downstream of the forested site. Hence, the results may partially be influenced by a location effect, where downstream sites are typically larger [91], though the distance between sites within one stream was low and a similar study found that invertebrate populations from the upstream and downstream site were connected [92]. Thus, the spatial location effect is likely negligible compared to the influence of land use. One reason for the lower FA, SFA, MUFA, and PUFA export in agricultural sites may have been energy costs due to agricultural stressors (for details of agricultural stressors see “[Agricultural stressors associated with FA profiles](#)”). Typically, in moderate stress conditions the cost for maintenance increases to meet the enhanced energy demand for protection against stressors and the repair of damages [92, 93]. This can lead to a consumption of energy reserves like lipids like neutral lipid FA [93–95]. Additionally, ingested FA, including PUFA, may be directly oxidized (β oxidation) to carbon dioxide and water to generate adenosine triphosphate (ATP) [96, 97]. The β oxidation of FA is a very efficient ATP source, which can facilitate ATP-dependent mechanisms like the elimination of toxicants, detoxification and the repair or replacement of damaged molecules [98]. Furthermore, agricultural stressors like pesticides can alter the sex ratio of emergent aquatic insects [99] and FA profiles as well as export can differ between male and female aquatic insects [37, 100, 101]. For example, female non-biting midges were associated with higher SFA levels and a higher total FA content, while male non-biting midges were associated with higher PUFA levels [101]. Future studies, including among others, the sex ratio of aquatic insects and the energy costs to cope with agricultural stressors can help to better understand the decrease in FA, SFA, MUFA, as well as, PUFA export in agricultural sites, despite the higher biomass export in comparison to forested sites.

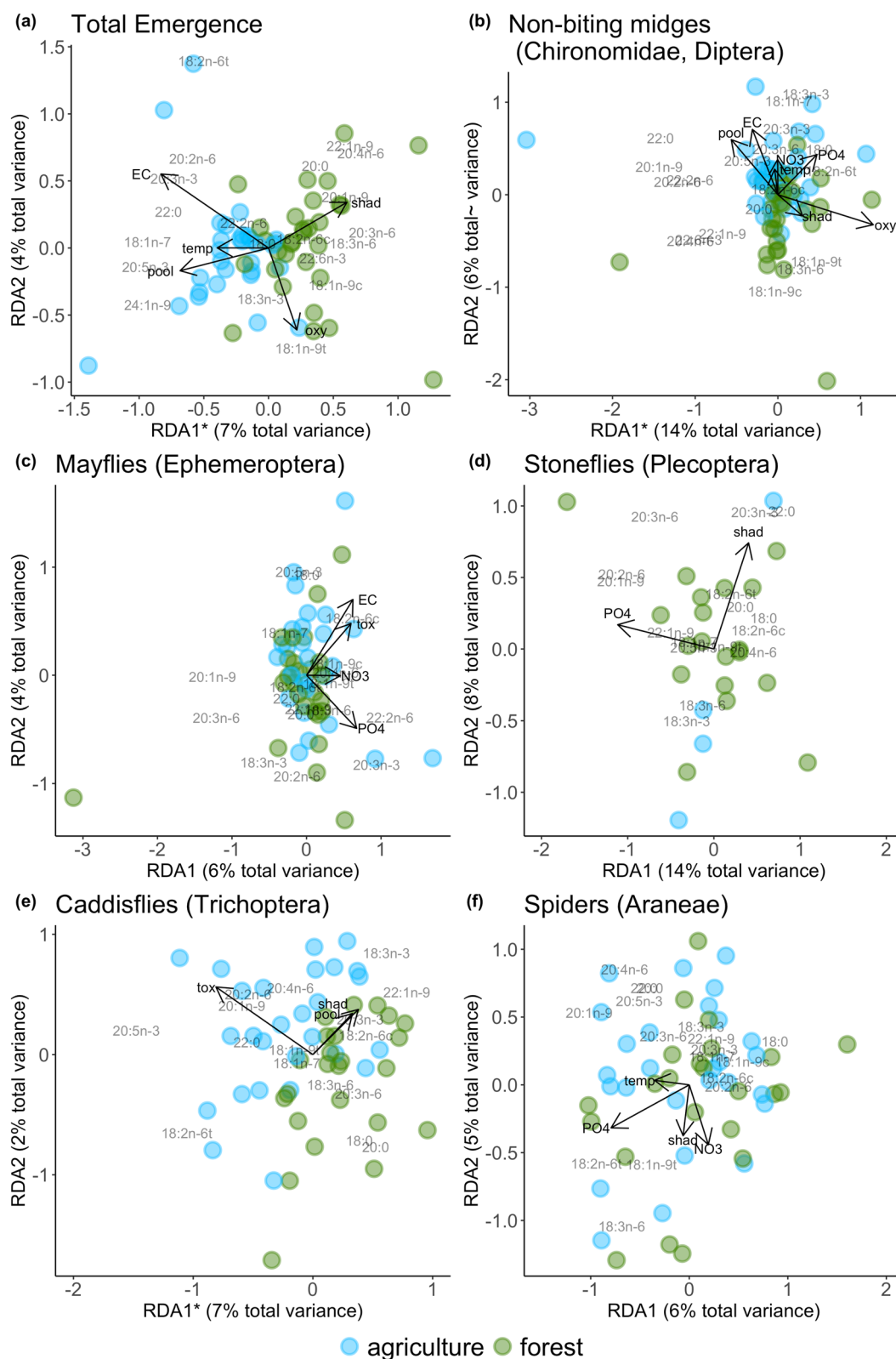


Fig. 3 Plot of the partial redundancy analysis (RDA) with stream and season as covariates. Colors indicate land-use type: blue = agriculture, green = forest. Asterisks at axes mark significance. *NO3* nitrate concentration, *PO4* phosphate concentration, *oxy* oxygen saturation, *pool* percentage pool habitats, *temp* temperature (for spiders: air temperature, for emergent aquatic insects: water temperature), *tox* pesticide toxicity, *EC* electrical conductivity, *shad* percentage of shading

The smaller PUFA export in agricultural sites may have consequences for riparian predators like decreased growth and impaired immune response [25–27]. The extent of the effects on riparian predators depends on their foraging strategy [24] and riparian predators may need to invest more time and energy in foraging to meet their PUFA demand, if the PUFA content in their food sources is decreased [102–104]. This may in turn impair their fitness [102, 104, 105].

The difference in FA export via stoneflies should be interpreted with caution, because only four observations (three in spring, one in summer) were available for agricultural sites, while in forested sites 33 observations (17 in spring, 13 in summer, three in autumn) were used in the HGAM. Furthermore, our sampling method missed stoneflies emerging by crawling on land, which may have led to an underestimation of the FA, SFA, MUFA and PUFA export via certain stonefly families. Notwithstanding, previous studies in our study region found only few stoneflies in agricultural streams [82, 106, 107]. Our sampling intervals may have allowed aquatic insects to utilize FA while being trapped for maximum 2–3 days, thereby resulting in a potential underestimation of FA export. Given that the sampling intervals were similar in both land-use types, this very likely does not affect comparisons between land-use types. Furthermore, the consumption of aquatic prey by riparian predators may also occur several days after the day of their emergence. Thus, the sampling interval may provide a realistic estimation of FA available for riparian predators. However, without being trapped the FA profiles of emergent aquatic insects feeding as adults (non-biting midges, stoneflies, some caddisflies) [108–110] may also change due to the consumption of terrestrial food sources. How the feeding as adults will affect the FA profiles of emergent aquatic insects will depend, for instance, on the assimilation time of terrestrial-derived FA in the tissue of adult emergent aquatic insects and their ability to synthesize FA [111]. Additionally, we omitted the FA content of other fly families than non-biting midges in the total export of FA, which also lead to an underestimation of the total FA export, though the biomass of non-biting midges peaked at least a factor of ten higher than the biomass of other fly families [29].

In spring, the PUFA export was higher than in the other seasons in both land-use types. Therefore, during spring riparian predators may have benefited most from the nutritional quality in the sense of PUFA of aquatic insects, because PUFA can enhance growth, reproductive success and immune response in riparian predators [25–27, 104]. Especially, for riparian birds breeding in spring this is favorable, because PUFA intake via aquatic insects seems to be crucial for their reproductive success [104, 112].

Differences of FA profiles between agricultural and forested sites

We found differences in FA profiles of mayflies, caddisflies and non-biting midges between agricultural and forested sites (Table 1, 2, Additional file 1: Figure S2). In all three orders, ALA, EPA, ODA and EA contributed most to the differences in FA profiles. EPA tended to have higher proportions in agricultural than forested sites, while ODA and EA tended to reach higher proportions in forested sites (Table 2, Additional file 1: Figure S2).

The differences across FA profiles may have originated from direct effects on aquatic insects. For instance, agricultural stressors probably required aquatic insects of agricultural sites to invest more energy into maintenance and repair processes [92, 93] compared to insects of forested sites. Thereby, FA may have been used to meet the increased energy demand [96]. Specific agricultural stressors are discussed in section “Agricultural stressors associated with FA profiles”.

Furthermore, the differences in FA profiles of aquatic insects may have originated from indirect effects in the aquatic food web, because FA are transferred from primary producers to higher trophic levels [19, 20]. In headwater streams, conditioned leaves may be an important food source [91, 113]. Conditioned leaves are colonized by microorganisms like aquatic fungi, which have been shown to alter the FA content of leaves [114]. The FA octadecanoic acid (18:0, ODA) is commonly found in aquatic fungi [114, 115] and tended to be higher in forested than agricultural sites. The percentage of shading tended to be smaller in agricultural than in forested sites (Additional file 1: Figure S3), which can lead to increased primary production in comparison to forested sites [86]. Therefore, the tendency of higher eicosapentaenoic acid (20:5n-3, EPA) levels of aquatic insects in agricultural sites may have originated from the relatively high EPA levels in aquatic primary producers [15, 19, 116]. EPA is an important membrane compound and serves as precursor for many bioactive molecules, e.g., eicosanoids [117, 118], this may affect the quality of emergent aquatic insects as food source for riparian predators. While the lower FA, SFA, MUFA, and PUFA content compromises the quality of emergent aquatic insects, the potential increase in single FA like EPA enhances the quality. Therefore, a higher EPA content may buffer potential negative effects of an overall lower FA content.

In addition, a turnover of aquatic insect families between forested and agricultural sites was shown [29] and may have contributed to the differences between FA profiles, driven by differences in the functional feeding groups and the trophic transfer of FA [37]. For instance, in summer four caddisfly families (Goeridae, Glossosomatidae, Phryganeidae, Philopotamidae) emerged only

in forested sites and two caddisfly families (Lepidostomatidae, Limnephilidae) only in agricultural sites [29]. The latter two families are shredders, while the families emerging only in the forested sites belonged to the functional feeding groups grazers, shredders, collectors and predators.

Although we found differences in FA profiles of mayflies, caddisflies and non-biting midges between forested and agricultural sites, we did not find any differences in FA profiles of spiders between forested and agricultural sites. Spiders are capable of extracting nutrients selectively from their prey to avoid nutritional imbalances [119]. Moreover, spiders usually consume aquatic and terrestrial insects [12, 13], thus also terrestrial insects contribute to the spiders' FA profile. Additionally, spiders are able to synthesize EPA de novo [23], while it is unknown if they can also synthesize other FA. Therefore, the synthesis of EPA by spiders may have masked potential land-use related differences. In previous studies the EPA content in ground dwelling spiders correlated with the biomass of stoneflies [39], PUFA profiles of riparian spiders were more similar to the PUFA profiles of emerging aquatic insects than terrestrial insects [120], and riparian spiders relied more on the PUFA content of aquatic emergent insects than spiders further away from a forested lake [17].

However, it remains unclear how other riparian predators may have been affected by land use in our study, because the amount of aquatic insects in the diet of riparian predators can vary with the foraging strategy. For instance, ground-hunting and web-building spiders differ in their proportion of aquatic insects in their diet and in environmental factors affecting the amount of consumed aquatic insects [12, 13]. Additionally, birds that are aerial insectivores may consume more aquatic insects than gleaners, bark-probers, as well as ground-foragers [121] and therefore may rely more on aquatic insect consumption to meet their PUFA demand [17, 26] than gleaners [24]. Future studies including riparian predators with different foraging strategies are needed to understand the effect of land use on FA profiles in the riparian food web better.

Agricultural stressors associated with FA profiles

Generally, environmental variables associated with impaired habitat quality for aquatic insects and spiders [12, 14, 29, 33, 34] were less favorable in agricultural than forested sites, e.g., higher pesticide toxicity as well as lower percentage of pool habitats and less shading (Additional file 1: Figure S3, Table S1). Nonetheless, little variation in FA profiles of aquatic insects in total and on order level was explained by these variables.

Primary production and nutrient availability in streams depend on light availability and can decrease with the increase of shading [86]. Therefore, shading and nutrients may affect aquatic insects' FA profiles by the trophic transfer of FA from primary producers to higher trophic levels [15, 19, 73, 116]. The effect of pool habitats on FA profiles may be explained by differences at the base of the food web (algal primary production, conditioned leaves, [122, 123]) and the occurrence of different functional feeding groups in pool and riffle habitats [124], which in turn can result in different FA profiles. EC (commonly used to estimate the salinity of water) can cause osmoregulatory stress and can be associated with ions that are toxic for aquatic insects [125]. Together with pesticide toxicity, EC can increase the energy demand of aquatic insects [92, 93], followed by FA utilization to fulfill the enhanced energy demand [96], and thereby altering the FA profiles of aquatic insects. To our knowledge, it is currently not known if specific FA are utilized or FA in general. Increasing temperature, as observed in agricultural sites, can cause FA profile alterations, as organisms adapt their PUFA content to adjust membrane fluidity to higher temperatures [83, 84]. However, the land-use intensity in the studied agricultural sites was similar. Furthermore, the intensity of agriculture and potentially of agricultural stressors may increase in the future, as for instance globally more pesticides with a higher toxicity towards aquatic insects are used [126–129].

Most variation in all FA profiles was explained by stream and season (Additional file 1: Table S7). The families of aquatic insects differed across streams and seasons. For instance, the mayfly families Arthropleidae and Siphonuridae emerged only in summer [29]. Therefore, the composition of aquatic insect assemblages may be more important for the FA profiles than agricultural stressors. This is partly in line with Kowarik et al. [39], who only found an effect of season on the FA profiles of aquatic insects, but not of environmental variables. Furthermore, the FA profiles of species of non-biting midges were shown to differ [37]. Future studies identifying underlying mechanisms of the differences between families are needed to estimate the effect of a turnover of aquatic insect assemblages between land-use types on FA profiles.

Conclusion

The quantity of PUFA export via aquatic insects was decreased in agricultural sites in comparison to forested sites. Additionally, we found differences in FA profiles of aquatic insects between land-use types. We suggest a decreased quality as food source for riparian predators relying on the dietary intake of PUFA. Future studies are needed to identify the mechanisms behind the lower

PUFA content in agricultural sites to implement strategies maintaining the PUFA content in aquatic insects. These strategies may focus on the mitigation of stressors that may affect aquatic insects, for example decreasing of pesticide exposure and reforestation to decrease temperature in agricultural streams. Furthermore, our results can be incorporated in modeling food-webs or meta-ecosystems to increase our understanding of effects of timing, food quantity as well as quality in these systems.

Abbreviations

ALA	Alpha-Linolenic acid
ATP	Adenosine triphosphate
EC	Electrical conductivity
EA	Eicosanoic acid
ELA	Elaidic acid
EPA	Eicosapentaenoic acid
FA	Fatty acids
GLA	Gamma-Linolenic acid
LIN	Linoleic acid
MUFA	Mono unsaturated fatty acids
ODA	Octadecanoic acid
PUFA	Polyunsaturated fatty acids
SFA	Saturated fatty acids

Supplementary Information

The online version contains supplementary material available at <https://doi.org/10.1186/s12302-023-00831-3>.

Additional file 1: Figure S1. Sampling sites in south-western Germany (European Environment Agency, 2007). **Table S1.** Mean and standard deviation (sd) of all environmental variables monitored during the field experiment in forested and agricultural sites. **Table S2.** Name, CAS-number, acute EC50 value, taxon and source of EC50 values of the pesticides used in the calculation of the logarithmic sum of the toxic unit (sumTU). **Table S3.** Name, CAS-number, *koc* (soil organic carbon–water partitioning coefficient) value of the pyrethroids used in the calculation of the particle-associated concentration of an estimate of the bioavailable concentration in water. **Table S4.** Time periods, in which samples of emergent aquatic insects were pooled on order level for fatty acid analysis. **Table S5.** Results of hierarchical generalized additive models (HGAM) to identify seasonal patterns of fatty acid export via aquatic insects. **Figure S2.** Mean proportion and standard deviation of fatty acids (FA). **Table S6.** 95% confidence intervals of the total export of all fatty acids, saturated fatty acids, monounsaturated fatty acids, and polyunsaturated fatty acids during the primary emergence period in forested and agricultural sites. **Table S7.** Results of the partial redundancy analysis (RDA) and RDA. **Figure S3.** Differences of environmental variables between forested and agricultural sites visualized with violin plots.

Acknowledgements

We thank Moritz Schäfer, Tim Ostertag and Laura Kieffer for their assistance in lyophilizing and weighing aquatic insects as well as spiders, Nadin Graf for support during identification of aquatic insects and Kilian Kenngott for technical support during the FA analysis. We thank the four anonymous reviewers for their helpful comments that improved the quality of the manuscript. The field study was facilitated by the "Pilotstudie zur Ermittlung der Belastung von Kleingewässern in der Agrarlandschaft mit Pflanzenschutzmittel-Rückständen" funded by the German Federal Ministry for the Environment, Nature Conservation and Nuclear Safety (FKZ 3717 63 403 0) and the German Helmholtz long-range strategic research funding. The Modular Observation Solutions for Earth Systems (MOSES) and the German Research Foundation (DFG; project number: 216374258) supplied additional funding. The FA analyses were funded by the DFG (Project Number 326210499/GRK 2360). Katharina Ohler was funded

by the German Academic Scholarship Foundation as well as the Interdisziplinäres Promotions- und Postdoczentrum (IPZ) completion scholarship.

Author contributions

KO, VCS, MLIess, RBS designed the study; KO, VCS, MLink selected the sampling sites; KO, VCS, MLink conducted the fieldwork; KO and LR conducted the fatty acid analysis and identified the spiders; KO identified the insects, analyzed the data and drafted the manuscript. All authors revised the manuscript.

Data availability statement

The R code and data are available under: <https://doi.org/10.5281/zenodo.8238429>.

Declarations

Competing interests

The authors declare no competing interests.

Author details

¹iES Landau, Institute for Environmental Sciences, RPTU Kaiserslautern-Landau, Fortstraße 7, 76829 Landau in der Pfalz, Germany. ²Department System-Ecotoxicology, Helmholtz Centre for Environmental Research, UFZ, 04318 Leipzig, Germany. ³Institute for Environmental Research, RWTH Aachen University, 52074 Aachen, Germany. ⁴Department Effect-Directed Analysis, Helmholtz Centre for Environmental Research, UFZ, 04318 Leipzig, Germany. ⁵Department of Evolutionary Ecology and Environmental Toxicology, Faculty of Biological Sciences, Goethe University Frankfurt, Max-Von-Laue-Strasse 13, 60438 Frankfurt am Main, Germany.

Received: 12 October 2023 Accepted: 24 December 2023

Published online: 09 January 2024

References

- Václavík T, Lautenbach S, Kuemmerle T, Seppelt R (2013) Mapping global land system archetypes. *Glob Environ Change* 23:1637–1647. <https://doi.org/10.1016/j.gloenvcha.2013.09.004>
- Collen B, Whitton F, Dyer EE et al (2014) Global patterns of freshwater species diversity, threat and endemism. *Glob Ecol Biogeogr* 23:40–51. <https://doi.org/10.1111/geb.12096>
- Reid AJ, Carlson AK, Creed IF et al (2019) Emerging threats and persistent conservation challenges for freshwater biodiversity. *Biol Rev* 94:849–873. <https://doi.org/10.1111/brv.12480>
- Vörösmarty CJ, McIntyre PB, Gessner MO et al (2010) Global threats to human water security and river biodiversity. *Nature* 467:555–561. <https://doi.org/10.1038/nature09440>
- Baxter CV, Fausch KD, Saunders WC (2005) Tangled webs: reciprocal flows of invertebrate prey link streams and riparian zones. *Freshw Biol* 50:201–220. <https://doi.org/10.1111/j.1365-2427.2004.01328.x>
- Gray LJ (1993) Response of insectivorous birds to emerging aquatic insects in riparian habitats of a tallgrass prairie stream. *Am Midl Nat* 129:288–300. <https://doi.org/10.2307/2426510>
- Kato C, Iwata T, Wada E (2004) Prey use by web-building spiders: stable isotope analyses of trophic flow at a forest-stream ecotone. *Ecol Res* 19:633–643. <https://doi.org/10.1111/j.1440-1703.2004.00678.x>
- Sullivan CM, Shiel CB, McAney CM, Fairley JS (1993) Analysis of the diets of Leisler's *Nyctalus leisleri*, Daubenton's *Myotis daubentoni* and pipistrelle *Pipistrellus pipistrellus* bats in Ireland. *J Zool* 231:656–663. <https://doi.org/10.1111/j.1469-7998.1993.tb01947.x>
- Ewald JA, Wheatley CJ, Aebischer NJ et al (2015) Influences of extreme weather, climate and pesticide use on invertebrates in cereal fields over 42 years. *Glob Change Biol* 21:3931–3950. <https://doi.org/10.1111/gcb.13026>
- Hallmann CA, Sorg M, Jongejans E et al (2017) More than 75 percent decline over 27 years in total flying insect biomass in protected areas. *PLoS ONE* 12:e0185809. <https://doi.org/10.1371/journal.pone.0185809>

11. Seibold S, Gossner MM, Simons NK et al (2019) Arthropod decline in grasslands and forests is associated with landscape-level drivers. *Nature* 574:671–674. <https://doi.org/10.1038/s41586-019-1684-3>
12. Graf N, Battes KP, Cimpean M et al (2020) Relationship between agricultural pesticides and the diet of riparian spiders in the field. *Environ Sci Eur* 32:1–12. <https://doi.org/10.1186/s12302-019-0282-1>
13. Krell B, Röder N, Link M et al (2015) Aquatic prey subsidies to riparian spiders in a stream with different land use types. *Limnologia* 51:1–7. <https://doi.org/10.1016/j.limno.2014.10.001>
14. Stenroth K, Polvi LE, Fältström E, Jonsson M (2015) Land-use effects on terrestrial consumers through changed size structure of aquatic insects. *Freshw Biol* 60:136–149. <https://doi.org/10.1111/fwb.12476>
15. Hixson SM, Sharma B et al (2015) Production, distribution, and abundance of long-chain omega-3 polyunsaturated fatty acids: a fundamental dichotomy between freshwater and terrestrial ecosystems. *Environ Rev* 23:414–424. <https://doi.org/10.1139/er-2015-0029>
16. Parmar TP, Kindinger AL, Mathieu-Resuge M et al (2022) Fatty acid composition differs between emergent aquatic and terrestrial insects—a detailed single system approach. *Front Ecol Evol* 10:952292
17. Twining CW, Brenna JT, Lawrence P et al (2019) Aquatic and terrestrial resources are not nutritionally reciprocal for consumers. *Funct Ecol* 33:2042–2052. <https://doi.org/10.1111/1365-2435.13401>
18. Ahlgren G, Gustafsson I-B, Boberg M (1992) Fatty acid content and chemical composition of freshwater microalgae 1. *J Phycol* 28:37–50. <https://doi.org/10.1111/j.0022-3646.1992.00037.x>
19. Kainz M, Arts MT, Mazumder A (2004) Essential fatty acids in the planktonic food web and their ecological role for higher trophic levels. *Limnol Oceanogr* 49:1784–1793. <https://doi.org/10.4319/lo.2004.49.5.1784>
20. Strandberg U, Hiltunen M, Jelkänen E et al (2015) Selective transfer of polyunsaturated fatty acids from phytoplankton to planktivorous fish in large boreal lakes. *Sci Total Environ* 536:858–865. <https://doi.org/10.1016/j.scitotenv.2015.07.010>
21. Sayanova OV, Napier JA (2004) Eicosapentaenoic acid: biosynthetic routes and the potential for synthesis in transgenic plants. *Phytochemistry* 65:147–158. <https://doi.org/10.1016/j.phytochem.2003.10.017>
22. Twining CW, Bernhardt JR, Derry AM et al (2021) The evolutionary ecology of fatty-acid variation: Implications for consumer adaptation and diversification. *Ecol Lett* 24:1709–1731. <https://doi.org/10.1111/ele.13771>
23. Mathieu-Resuge M, Pilecky M, Twining CW et al (2022) Dietary availability determines metabolic conversion of long-chain polyunsaturated fatty acids in spiders: a dual compound-specific stable isotope approach. *Oikos*. <https://doi.org/10.1111/oik.08513>
24. Twining CW, Parmar TP, Mathieu-Resuge M et al (2021) Use of fatty acids from aquatic prey varies with foraging strategy. *Front Ecol Evol*. <https://doi.org/10.3389/fevo.2021.735350>
25. Fritz KA, Kirschman LJ, McCay SD et al (2017) Subsidies of essential nutrients from aquatic environments correlate with immune function in terrestrial consumers. *Freshw Sci* 36:893–900. <https://doi.org/10.1086/694451>
26. Twining CW, Brenna JT, Lawrence P et al (2016) Omega-3 long-chain polyunsaturated fatty acids support aerial insectivore performance more than food quantity. *Proc Natl Acad Sci* 113:10920–10925
27. Mayntz D, Toft S (2001) Nutrient composition of the prey's diet affects growth and survivorship of a generalist predator. *Oecologia* 127:207–213. <https://doi.org/10.1007/s004420000591>
28. Nakano S, Murakami M (2001) Reciprocal subsidies: dynamic interdependence between terrestrial and aquatic food webs. *Proc Natl Acad Sci* 98:166–170. <https://doi.org/10.1073/pnas.98.1.166>
29. Ohler K, Schreiner VC, Link M et al (2023) Land use changes biomass and temporal patterns of insect cross-ecosystem flows. *Glob Change Biol* 29:81–96. <https://doi.org/10.1111/gcb.16462>
30. Sato T, El-Sabaawi RW, Campbell K et al (2016) A test of the effects of timing of a pulsed resource subsidy on stream ecosystems. *J Anim Ecol* 85:1136–1146. <https://doi.org/10.1111/1365-2656.12516>
31. Uno H (2016) Stream thermal heterogeneity prolongs aquatic-terrestrial subsidy and enhances riparian spider growth. *Ecology* 97:2547–2553. <https://doi.org/10.1002/ecs.1552>
32. Gounand I, Harvey E, Little CJ, Altermatt F (2018) Meta-ecosystems 2.0: rooting the theory into the field. *Trends Ecol Evol* 33:36–46. <https://doi.org/10.1016/j.tree.2017.10.006>
33. Raitif J, Plantegenest M, Agator O et al (2018) Seasonal and spatial variations of stream insect emergence in an intensive agricultural landscape. *Sci Total Environ* 644:594–601. <https://doi.org/10.1016/j.scitotenv.2018.07.021>
34. Graf N, Battes KP, Cimpean M et al (2019) Do agricultural pesticides in streams influence riparian spiders? *Sci Total Environ* 660:126–135. <https://doi.org/10.1016/j.scitotenv.2018.12.370>
35. Martin-Creuzburg D, Kowarik C, Straile D (2017) Cross-ecosystem fluxes: export of polyunsaturated fatty acids from aquatic to terrestrial ecosystems via emerging insects. *Sci Total Environ* 577:174–182. <https://doi.org/10.1016/j.scitotenv.2016.10.156>
36. Moyo S, Chari LD, Villet MH, Richoux NB (2017) Decoupled reciprocal subsidies of biomass and fatty acids in fluxes of invertebrates between a temperate river and the adjacent land. *Aquat Sci* 79:689–703. <https://doi.org/10.1007/s00027-017-0529-0>
37. Scharnweber K, Chaguaceda F, Dalman E et al (2020) The emergence of fatty acids—aquatic insects as vectors along a productivity gradient. *Freshw Biol* 65:565–578. <https://doi.org/10.1111/fwb.13454>
38. Pietz S, Kolbenschlager S, Röder N et al (2023) Subsidy quality affects common riparian web-building spiders: consequences of aquatic contamination and food resource. *Environ Toxicol Chem* 42:1346–1358. <https://doi.org/10.1002/etc.5614>
39. Kowarik C, Martin-Creuzburg D, Mathers KL et al (2022) Stream degradation affects aquatic resource subsidies to riparian ground-dwelling spiders. *Sci Total Environ* 855:158658. <https://doi.org/10.1016/j.scitotenv.2022.158658>
40. Ramberg E, Burdon FJ, Sargac J et al (2020) The structure of riparian vegetation in agricultural landscapes influences spider communities and aquatic-terrestrial linkages. *Water* 12:2855. <https://doi.org/10.3390/w12102855>
41. Marcarelli AM, Baxter CV, Mineau MM, Hall RO (2011) Quantity and quality: unifying food web and ecosystem perspectives on the role of resource subsidies in freshwaters. *Ecology* 92:1215–1225. <https://doi.org/10.1890/10-2240.1>
42. Pichon B, Thébaud E, Lacroix G, Gounand I (2023) Quality matters: stoichiometry of resources modulates spatial feedbacks in aquatic-terrestrial meta-ecosystems. *Ecol Lett* 26:1700–1713. <https://doi.org/10.1111/ele.14284>
43. Osakpolor SE, Manfrin A, Leroux SJ, Schäfer RB (2023) Cascading impacts of changes in subsidy quality on recipient ecosystem functioning. *Ecology* 104:e4023. <https://doi.org/10.1002/ecs.4023>
44. Corbet PS (1964) Temporal patterns of emergence in aquatic insects. *Can Entomol* 96:264–279. <https://doi.org/10.4039/Ent96264-1>
45. Voß K, Fernández D, Schäfer RB (2015) Organic matter breakdown in streams in a region of contrasting anthropogenic land use. *Sci Total Environ* 527–528:179–184. <https://doi.org/10.1016/j.scitotenv.2015.04.071>
46. Liess M, von der Ohe PC (2005) Analyzing effects of pesticides on invertebrate communities in streams. *Environ Toxicol Chem* 24:954–965. <https://doi.org/10.1897/03-652.1>
47. Halbach K, Möder M, Schrader S et al (2021) Small streams—large concentrations? Pesticide monitoring in small agricultural streams in Germany during dry weather and rainfall. *Water Res* 203:117535. <https://doi.org/10.1016/j.watres.2021.117535>
48. Liess M, Liebmann L, Lück M, et al (2022) Umsetzung des Nationalen Aktionsplans zur nachhaltigen Anwendung von Pflanzenschutzmitteln (NAP) – Pilotstudie zur Ermittlung der Belastung von Kleingewässern in der Agrarlandschaft mit Pflanzenschutzmittel-Rückständen. Umweltbundesamt
49. Liess M, Liebmann L, Vormeyer P et al (2021) Pesticides are the dominant stressors for vulnerable insects in lowland streams. *Water Res* 201:117262. <https://doi.org/10.1016/j.watres.2021.117262>
50. Gan J, Lee SJ, Liu WP et al (2005) Distribution and persistence of pyrethroids in runoff sediments. *J Environ Qual* 34:836–841. <https://doi.org/10.2134/jeq2004.0240>
51. Rico A, den Brink PJV (2015) Evaluating aquatic invertebrate vulnerability to insecticides based on intrinsic sensitivity, biological traits, and

- toxic mode of action. *Environ Toxicol Chem* 34:1907–1917. <https://doi.org/10.1002/etc.3008>
52. Rubach MN, Baird DJ, den Brink PJV (2010) A new method for ranking mode-specific sensitivity of freshwater arthropods to insecticides and its relationship to biological traits. *Environ Toxicol Chem* 29:476–487. <https://doi.org/10.1002/etc.55>
 53. Schäfer RB, Pettigrove V, Rose G et al (2011) Effects of pesticides monitored with three sampling methods in 24 sites on macroinvertebrates and microorganisms. *Environ Sci Technol* 45:1665–1672. <https://doi.org/10.1021/es103227q>
 54. Toro DMD, Zarba CS, Hansen DJ et al (1991) Technical basis for establishing sediment quality criteria for nonionic organic chemicals using equilibrium partitioning. *Environ Toxicol Chem* 10:1541–1583. <https://doi.org/10.1002/etc.5620101203>
 55. Lewis KA, Tzilivakis J, Warner DJ, Green A (2016) An international database for pesticide risk assessments and management. *Hum Ecol Risk Assess Int J* 22:1050–1064. <https://doi.org/10.1080/10807039.2015.1133242>
 56. National Center for Biotechnology Information (2021) PubChem Compound Summary for CID 9839306, Prallethrin. <https://pubchem.ncbi.nlm.nih.gov/compound/Prallethrin>. Accessed 22 Feb 2021
 57. Schäfer RB, Gerner N, Kefford BJ et al (2013) How to characterize chemical exposure to predict ecologic effects on aquatic communities? *Environ Sci Technol* 47:7996–8004. <https://doi.org/10.1021/es4014954>
 58. Scharmüller A, Schreiner VC, Schäfer RB (2020) Standardtox: standardizing toxicity data. *Data* 5:46. <https://doi.org/10.3390/data5020046>
 59. US EPA (2021) ECOTOX Knowledgebase. US EPA, Washington
 60. Malaj E, von der Ohe PC, Grote M et al (2014) Organic chemicals jeopardize the health of freshwater ecosystems on the continental scale. *Proc Natl Acad Sci* 111:9549–9554. <https://doi.org/10.1073/pnas.1321082111>
 61. Reitze M, Nentwig W (1991) Comparative investigations into the feeding ecology of six Mantodea species. *Oecologia* 86:568–574. <https://doi.org/10.1007/BF00318324>
 62. Foelix RF (2011) *Biology of spiders*, 3rd edn. Oxford University Press, Oxford
 63. Ohler K, Schreiner VC, Link M, et al (2023) *ohler_fa*
 64. Cadmus P, Pomeranz JPF, Kraus JM (2016) Low-cost floating emergence net and bottle trap: comparison of two designs. *J Freshw Ecol* 31:653–658. <https://doi.org/10.1080/02705060.2016.1217944>
 65. Gray LJ (1989) Emergence production and export of aquatic insects from a tallgrass prairie stream. *Southwest Nat* 34:313–318. <https://doi.org/10.2307/3672158>
 66. Jackson JK, Fisher SG (1986) Secondary production, emergence, and export of aquatic insects of a sonoran desert stream. *Ecology* 67:629–638. <https://doi.org/10.2307/1937686>
 67. Roberts MJ (1995) *Spiders of Britain and Northern Europe*. HarperCollins Publishers
 68. Bährmann R, Müller HJ (2015) *Bestimmung wirbelloser Tiere: Bildtafeln für zoologische Bestimmungsübungen und Exkursionen*, 7th edn. Spektrum Akademischer Verlag, Heidelberg
 69. Nilsson A (1996) *Aquatic insects of Northern Europe. A taxonomic handbook*, vol 2: Odonata, Diptera. Apollo Books, Stenstrup
 70. Nilsson A (1996) *Aquatic Insects of Northern Europe. A Taxonomic Handbook*, Vol. 1: Ephemeroptera, Plecoptera, Heteroptera, Megaloptera, Neuroptera, Coleoptera, Trichoptera and Lepidoptera. Apollo Books, Stenstrup
 71. Schäfer M, Brohmer P (2010) *Fauna von Deutschland. Ein Bestimmungsbuch unserer heimischen Tierwelt*, 23rd ed. Quelle & Meyer, Wiebelsheim
 72. Folch J, Lees M, Stanley GHS (1957) A simple method for the isolation and purification of total lipides from animal tissues. *J Biol Chem* 226:497–509. [https://doi.org/10.1016/S0021-9258\(18\)64849-5](https://doi.org/10.1016/S0021-9258(18)64849-5)
 73. Ohler K, Schreiner VC, Martin-Creuzburg D, Schäfer RB (2023) Trophic transfer of polyunsaturated fatty acids across the aquatic–terrestrial interface: an experimental tritrophic food chain approach. *Ecol Evol* 13:e9927. <https://doi.org/10.1002/ece3.9927>
 74. Wenig P, Odermatt J (2010) OpenChrom: a cross-platform open source software for the mass spectrometric analysis of chromatographic data. *BMC Bioinformatics* 11:405. <https://doi.org/10.1186/1471-2105-11-405>
 75. R Core Team (2022) *R: a language and environment for statistical computing*. R Core Team
 76. Pedersen EJ, Miller DL, Simpson GL, Ross N (2019) Hierarchical generalized additive models in ecology: an introduction with mgcv. *PeerJ* 7:e6876. <https://doi.org/10.7717/peerj.6876>
 77. Wood SN (2011) Fast stable restricted maximum likelihood and marginal likelihood estimation of semiparametric generalized linear models. *J R Stat Soc Ser B Stat Methodol* 73:3–36. <https://doi.org/10.1111/j.1467-9868.2010.00749.x>
 78. Oksanen J, Blanchet FG, Friendly M, et al (2020) *vegan community ecology package version 2.5–7* November 2020
 79. Benjamini Y, Hochberg Y (1995) Controlling the false discovery rate: a practical and powerful approach to multiple testing. *J R Stat Soc Ser B Methodol* 57:289–300. <https://doi.org/10.1111/j.2517-6161.1995.tb02031.x>
 80. Jähnig SC, Baranov V, Altermatt F et al (2021) Revisiting global trends in freshwater insect biodiversity. *WIREs Water* 8:e1506. <https://doi.org/10.1002/wat2.1506>
 81. Fernández D, Voss K, Bundschuh M et al (2015) Effects of fungicides on decomposer communities and litter decomposition in vineyard streams. *Sci Total Environ* 533:40–48. <https://doi.org/10.1016/j.scitotenv.2015.06.090>
 82. Englert D, Zubrod JP, Schulz R, Bundschuh M (2015) Variability in ecosystem structure and functioning in a low order stream: implications of land use and season. *Sci Total Environ* 538:341–349. <https://doi.org/10.1016/j.scitotenv.2015.08.058>
 83. Arts MT, Kohler CC (2009) Health and condition in fish: the influence of lipids on membrane competency and immune response. In: Kainz M, Brett MT, Arts MT (eds) *Lipids in aquatic ecosystems*. Springer, New York, pp 237–256
 84. Fuschino JR, Guschina IA, Dobson G et al (2011) Rising water temperatures alter lipid dynamics and reduce N-3 essential fatty acid concentrations in *scenedesmus obliquus* (chlorophyta)1. *J Phycol* 47:763–774. <https://doi.org/10.1111/j.1529-8817.2011.01024.x>
 85. Carlson PE, McKie BG, Sandin L, Johnson RK (2016) Strong land-use effects on the dispersal patterns of adult stream insects: implications for transfers of aquatic subsidies to terrestrial consumers. *Freshw Biol* 61:848–861. <https://doi.org/10.1111/fwb.12745>
 86. Griffiths NA, Tank JL, Royer TV et al (2013) Agricultural land use alters the seasonality and magnitude of stream metabolism. *Limnol Oceanogr* 58:1513–1529. <https://doi.org/10.4319/lo.2013.58.4.1513>
 87. Terui A, Negishi JN, Watanabe N, Nakamura F (2018) Stream resource gradients drive consumption rates of supplemental prey in the adjacent riparian zone. *Ecosystems* 21:772–781. <https://doi.org/10.1007/s10021-017-0183-3>
 88. Wickham H (2016) *ggplot2*. Springer International Publishing, Cham
 89. Jaschinski S, Brepohl DC, Sommer U (2011) Seasonal variation in carbon sources of mesograzers and small predators in an eelgrass community: stable isotope and fatty acid analyses. *Mar Ecol Prog Ser* 431:69–82. <https://doi.org/10.3354/meps09143>
 90. Chapman MG, Underwood AJ (1999) Ecological patterns in multivariate assemblages: information and interpretation of negative values in ANOSIM tests. *Mar Ecol Prog Ser* 180:257–265. <https://doi.org/10.3354/meps180257>
 91. Vannote RL, Minshall GW, Cummins KW et al (1980) The river continuum concept. *Can J Fish Aquat Sci* 37:130–137. <https://doi.org/10.1139/f80-017>
 92. Schneeweiss A, Schreiner VC, Liess M et al (2023) Population structure and insecticide response of *Gammarus* spp. in agricultural and upstream forested sites of small streams. *Environ Sci Eur* 35:1–16. <https://doi.org/10.1186/s12302-023-00747-y>
 93. Calow P, Forbes VE (1998) How do physiological responses to stress translate into ecological and evolutionary processes? *Comp Biochem Physiol A Mol Integr Physiol* 120:11–16. [https://doi.org/10.1016/S1095-6433\(98\)10003-X](https://doi.org/10.1016/S1095-6433(98)10003-X)
 94. Sokolova IM, Frederich M, Bagwe R et al (2012) Energy homeostasis as an integrative tool for assessing limits of environmental stress tolerance in aquatic invertebrates. *Mar Environ Res* 79:1–15. <https://doi.org/10.1016/j.marenvres.2012.04.003>
 95. Lannig G, Flores JF, Sokolova IM (2006) Temperature-dependent stress response in oysters, *Crassostrea virginica*: pollution reduces temperature

- tolerance in oysters. *Aquat Toxicol* 79:278–287. <https://doi.org/10.1016/j.aquatox.2006.06.017>
96. Azeez OI, Meintjes R, Chamunorwa JP (2014) Fat body, fat pad and adipose tissues in invertebrates and vertebrates: the nexus. *Lipids Health Dis* 13:1–13. <https://doi.org/10.1186/1476-511X-13-71>
 97. Tocher DR (2003) Metabolism and functions of lipids and fatty acids in teleost fish. *Rev Fish Sci* 11:107–184. <https://doi.org/10.1080/713610925>
 98. Gilbert LI (1967) Lipid metabolism and function in insects. In: Beament JWL, Treharne JE, Wigglesworth VB (eds) *Advances in insect physiology*. Academic Press, pp 69–211
 99. Sokolova I (2021) Bioenergetics in environmental adaptation and stress tolerance of aquatic ectotherms: linking physiology and ecology in a multi-stressor landscape. *J Exp Biol* 224:236802. <https://doi.org/10.1242/jeb.236802>
 100. Hahn T, Liess M, Schulz R (2001) Effects of the hormone mimetic insecticide tebufenozide on chironomid riparian larvae in two different exposure setups. *Ecotoxicol Environ Saf* 49:171–178. <https://doi.org/10.1006/eesa.2001.2055>
 101. Gerber R, Cabon L, Piscart C et al (2022) Body stores of emergent aquatic insects are associated with body size, sex, swarming behaviour and dispersal strategies. *Freshw Biol* 67:2161–2175. <https://doi.org/10.1111/fwb.14003>
 102. Pietz S, Kainz MJ, Schröder H et al (2023) Metal exposure and sex shape the fatty acid profile of midges and reduce the aquatic subsidy to terrestrial food webs. *Environ Sci Technol* 57:951–962. <https://doi.org/10.1021/acs.est.2c05495>
 103. Schoener TW (1971) Theory of feeding strategies. *Annu Rev Ecol Syst* 2:369–404
 104. Senécal S, Riva J-C, O'Connor RS et al (2021) Poor prey quality is compensated by higher provisioning effort in passerine birds. *Sci Rep* 11:11182. <https://doi.org/10.1038/s41598-021-90658-w>
 105. Twining CW, Shipley JR, Winkler DW (2018) Aquatic insects rich in omega-3 fatty acids drive breeding success in a widespread bird. *Ecol Lett* 21:1812–1820. <https://doi.org/10.1111/ele.13156>
 106. Naef-Daenzer B, Keller LF (1999) The foraging performance of great and blue tits (*Parus major* and *P. caeruleus*) in relation to caterpillar development, and its consequences for nestling growth and fledging weight. *J Anim Ecol* 68:708–718. <https://doi.org/10.1046/j.1365-2656.1999.00318.x>
 107. Schneeweiss A, Schreiner VC, Reemtsma T et al (2022) Potential propagation of agricultural pesticide exposure and effects to upstream sections in a biosphere reserve. *Sci Total Environ* 836:155688. <https://doi.org/10.1016/j.scitotenv.2022.155688>
 108. Voß K, Schäfer RB (2017) Taxonomic and functional diversity of stream invertebrates along an environmental stress gradient. *Ecol Indic* 81:235–242. <https://doi.org/10.1016/j.ecolind.2017.05.072>
 109. Armitage PD, Cranston PS, Pinder LCV (1995) *The chironomidae*. Springer, Dordrecht
 110. Brittain JE (1990) Life history strategies in Ephemeroptera and Plecoptera. In: Campbell IC (ed) *Mayflies and stoneflies: life histories and biology*. Springer, Dordrecht, pp 1–12
 111. Petersson E, Hasselrot AT (1994) Mating and nectar feeding in the psychomyiid caddis fly *Tinodes waeneri*. *Aquat Insects* 16:177–187. <https://doi.org/10.1080/01650429409361553>
 112. Galloway AWE, Budge SM (2020) The critical importance of experimentation in biomarker-based trophic ecology. *Philos Trans R Soc B Biol Sci* 375:20190638. <https://doi.org/10.1098/rstb.2019.0638>
 113. Shipley JR, Twining CW, Mathieu-Resuge M et al (2022) Climate change shifts the timing of nutritional flux from aquatic insects. *Curr Biol* 32:1342–1349.e3. <https://doi.org/10.1016/j.cub.2022.01.057>
 114. Graça M, Canhoto C (2006) Leaf litter processing in low order streams. *Limnetica* ISSN 0213–8409 Vol 25 N° 1–2 2006 Ejemplar Dedic Ecol Iber Inland Waters Homage Ramón Margalef Pags 1–10 25:
 115. Zubrod JP, Englert D, Wolfram J et al (2017) Long-term effects of fungicides on leaf-associated microorganisms and shredder populations—an artificial stream study. *Environ Toxicol Chem* 36:2178–2189. <https://doi.org/10.1002/etc.3756>
 116. Arce Funck J, Bec A, Perrière F et al (2015) Aquatic hyphomycetes: a potential source of polyunsaturated fatty acids in detritus-based stream food webs. *Fungal Ecol* 13:205–210. <https://doi.org/10.1016/j.funeco.2014.09.004>
 117. Taipale S, Strandberg U, Peltomaa E et al (2013) Fatty acid composition as biomarkers of freshwater microalgae: analysis of 37 strains of microalgae in 22 genera and in seven classes. *Aquat Microb Ecol* 71:165–178. <https://doi.org/10.3354/ame01671>
 118. Arts MT, Ackman RG, Holub BJ (2001) “Essential fatty acids” in aquatic ecosystems: a crucial link between diet and human health and evolution. *Can J Fish Aquat Sci* 58:122–137. <https://doi.org/10.1139/f00-224>
 119. Stanley-Samuels DW, Jurenka RA, Cripps C et al (1988) Fatty acids in insects: Composition, metabolism, and biological significance. *Arch Insect Biochem Physiol* 9:1–33. <https://doi.org/10.1002/arch.940090102>
 120. Mayntz D, Raubenheimer D, Salomon M et al (2005) Nutrient-specific foraging in invertebrate predators. *Science* 307:111–113. <https://doi.org/10.1126/science.1105493>
 121. Kowarik C, Martin-Creuzburg D, Robinson CT (2021) Cross-ecosystem linkages: transfer of polyunsaturated fatty acids from streams to riparian spiders via emergent insects. *Front Ecol Evol*. <https://doi.org/10.3389/fevo.2021.707570>
 122. Schilke PR, Bartrons M, Gorzo JM et al (2020) Modeling a cross-ecosystem subsidy: forest songbird response to emergent aquatic insects. *Landsc Ecol* 35:1587–1604. <https://doi.org/10.1007/s10980-020-01038-0>
 123. Keithan ED, Lowe RL (1985) Primary productivity and spatial structure of phytolith growth in streams in the Great Smoky Mountains National Park, Tennessee. *Hydrobiologia* 123:59–67. <https://doi.org/10.1007/BF00006615>
 124. Whitley GW, Rabeni CF (2000) Benthic community metabolism in three habitats in an Ozark stream. *Hydrobiologia* 437:165–170. <https://doi.org/10.1023/A:1026559008308>
 125. Angradi TR (1996) Inter-habitat variation in benthic community structure, function, and organic matter storage in 3 Appalachian headwater streams. *J North Am Benthol Soc* 15:42–63. <https://doi.org/10.2307/1467432>
 126. Cañedo-Argüelles M, Kefford BJ, Piscart C et al (2013) Salinisation of rivers: an urgent ecological issue. *Environ Pollut* 173:157–167. <https://doi.org/10.1016/j.envpol.2012.10.011>
 127. Bernhardt ES, Rosi EJ, Gessner MO (2017) Synthetic chemicals as agents of global change. *Front Ecol Environ* 15:84–90. <https://doi.org/10.1002/fee.1450>
 128. Kattwinkel M, Kühne J-V, Foit K, Liess M (2011) Climate change, agricultural insecticide exposure, and risk for freshwater communities. *Ecol Appl* 21:2068–2081. <https://doi.org/10.1890/10-1993.1>
 129. Schulz R, Bub S, Petschick LL et al (2021) Applied pesticide toxicity shifts toward plants and invertebrates, even in GM crops. *Science* 372:81–84. <https://doi.org/10.1126/science.abe1148>

Publisher's Note

Springer Nature remains neutral with regard to jurisdictional claims in published maps and institutional affiliations.

Submit your manuscript to a SpringerOpen® journal and benefit from:

- Convenient online submission
- Rigorous peer review
- Open access: articles freely available online
- High visibility within the field
- Retaining the copyright to your article

Submit your next manuscript at ► [springeropen.com](https://www.springeropen.com)